

## The Urban A01

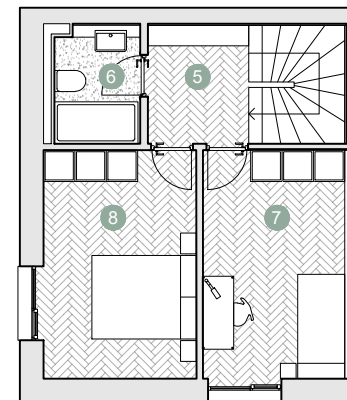
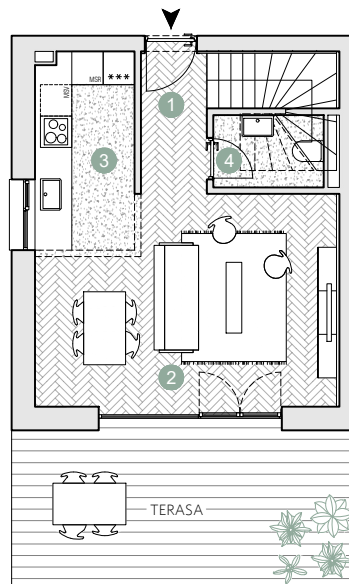
☑ Nr. camere: 3

☑ Nr. bai: 2

☑ Etaj: P+1 (duplex) / 4

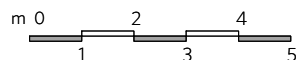
☑ Suprafata construita locuinta = 94.7 m<sup>2</sup>

☑ Suprafata construita totala = 114.7 m<sup>2</sup>



 Prime Kapital

 adn  
BIROU ARHITECTURA



### PARTER

Suprafete utile:

1. hol intrare	3.4 m <sup>2</sup>
2. living	22.1 m <sup>2</sup>
3. bucatarie & depozitare	6.5 m <sup>2</sup>
4. grup sanitar	3.1 m <sup>2</sup>

.....  
Total suprafete utile parter 35.1 m<sup>2</sup>

**Terasa 20.0 m<sup>2</sup>**

### ETAJUL 1

Suprafete utile:

5. hol & scara	8.5 m <sup>2</sup>
6. baie	3.6 m <sup>2</sup>
7. dormitor	12.0 m <sup>2</sup>
8. dormitor	12.8 m <sup>2</sup>

.....  
Total suprafete utile etaj 1 36.9 m<sup>2</sup>