

The Urban A04

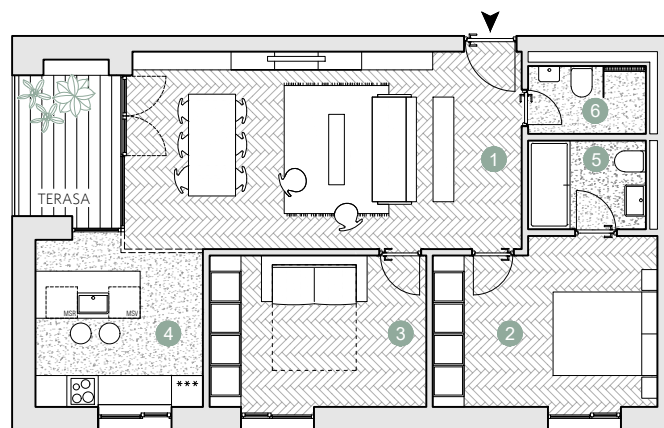
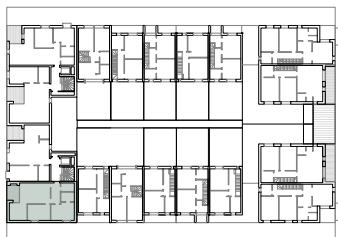
☑ Nr. camere: 3

☑ Nr. bai: 2

☑ Etaj: 2 / 4

☑ Suprafata construita locuinta = 89.9 m²

☑ Suprafata construita totala = 95.8 m²



ETAJ 2

Suprafete utile:

1. hol acces & living	28.3 m ²
2. dormitor	13.5 m ²
3. dormitor	12.1 m ²
4. bucatarie	9.9 m ²
5. baie	3.8 m ²
6. baie	2.9 m ²

.....
Total suprafete utile etaj 2 70.5 m²

Terasa **5.9 m²**

 Prime Kapital

 adn
BIROU DE INGENIERIE

