

The Urban A05

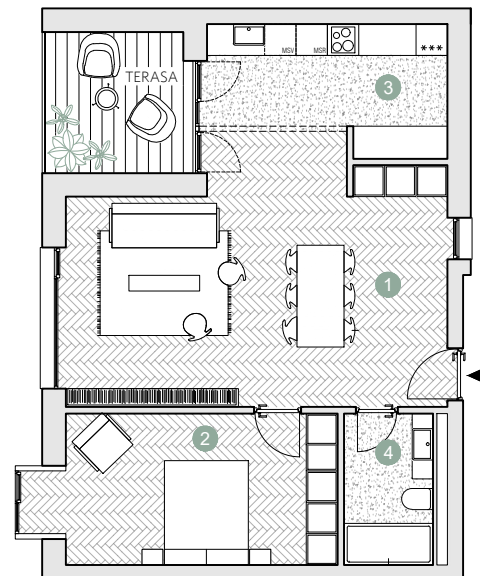
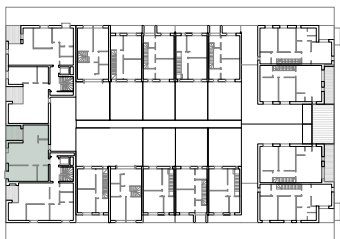
☑ Nr. camere: 2

☑ Nr. bai: 1

☑ Etaj: 2 / 4

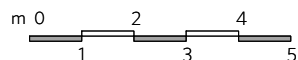
☑ Suprafata construita locuinta = 78.8 m²

☑ Suprafata construita totala = 86.4 m²



 Prime Kapital

 adn
BIROU ARHITECTURA



ETAJ 2

Suprafete utile:

1. living & dining	34.7 m ²
2. dormitor	15.9 m ²
3. bucatarie	10.0 m ²
4. baie	4.8 m ²

.....
Total suprafete utile etaj 2 65.4 m²

Terasa 7.6 m²