

The Urban A07

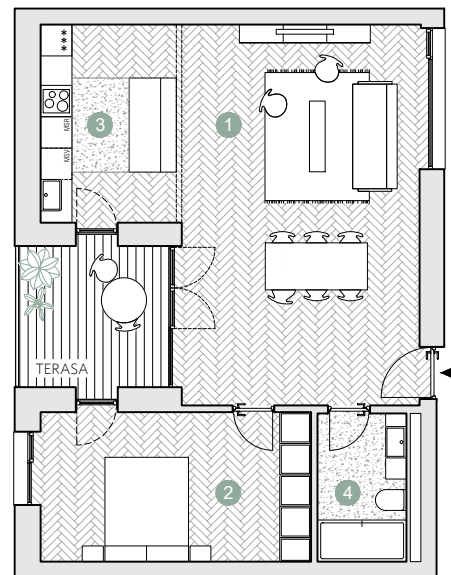
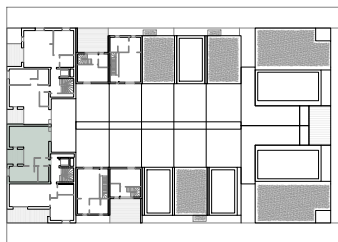
☑ Nr. camere: 2

☑ Nr. bai: 1

☑ Etaj: 3 / 4

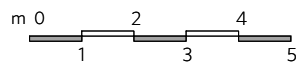
☑ Suprafata construita locuinta = 78.7 m²

☑ Suprafata construita totala = 86.8 m²



 Prime Kapital

 adn
DIPOU ARCHITECTURA



ETAJ 3

Suprafete utile:

1. living	33.6 m ²
2. dormitor	15.2 m ²
3. bucatarie	10.3 m ²
4. baie	4.8 m ²

.....
Total suprafete utile etaj 3 63.9 m²

Terasa 8.1 m²