

The Urban A09

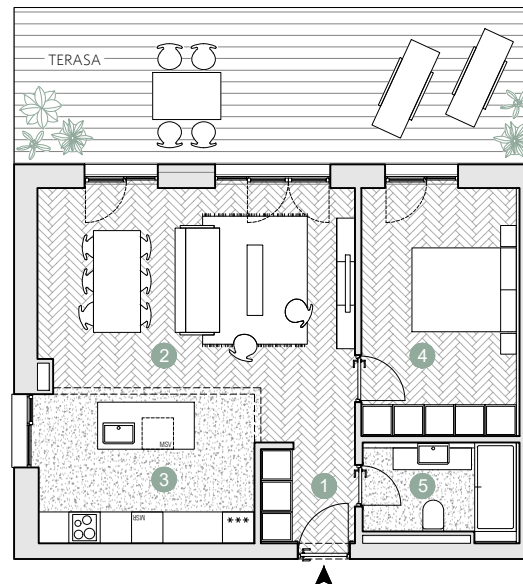
☑ Nr. camere: 2

☑ Nr. bai: 1

☑ Etaj: Parter / 4

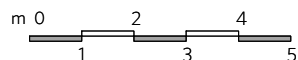
☑ Suprafata construita locuinta = 72.7 m²

☑ Suprafata construita totala = 102.8 m²



 Prime Kapital

 adn
DIZAIN ARHITECTURA



PARTER

Suprafete utile:

1. hol intrare	3.2 m ²
2. living	25.9 m ²
3. bucatarie	11.8 m ²
4. dormitor	14.3 m ²
5. baie	5.2 m ²

.....
Total suprafete utile parter 60.4 m²

Terasa 30.1 m²