

The Urban A11

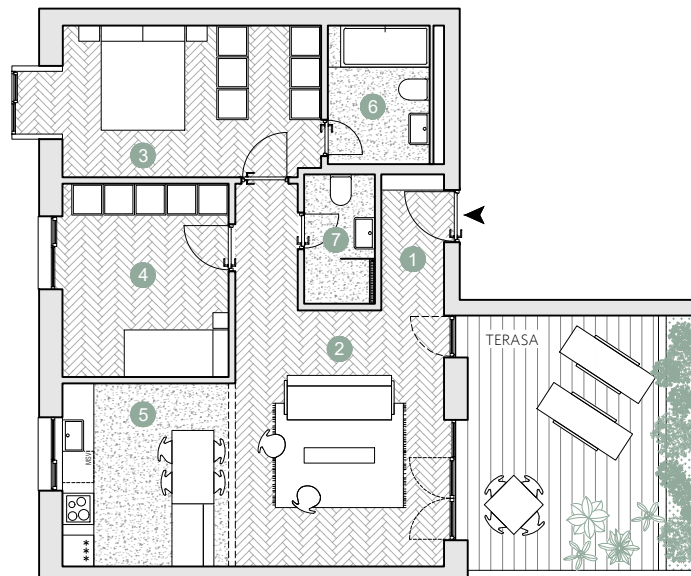
☑ Nr. camere: 3

☑ Nr. bai: 2

☑ Etaj: 1 / 4

☑ Suprafata construita locuinta = 86.8 m²

☑ Suprafata construita totala = 105.0 m²



ETAJ 1

Suprafete utile:

1. hol intrare	3.0 m ²
2. living & dining	28.1 m ²
3. dormitor	15.1 m ²
4. dormitor	12.0 m ²
5. bucatarie	5.9 m ²
6. baie	4.9 m ²
7. baie	3.3 m ²

.....
Total suprafete utile etaj 1 72.3 m²

Terasa 18.2 m²

 Prime Kapital

 adn
BIROU DE INGENIERI

