

The Urban A12

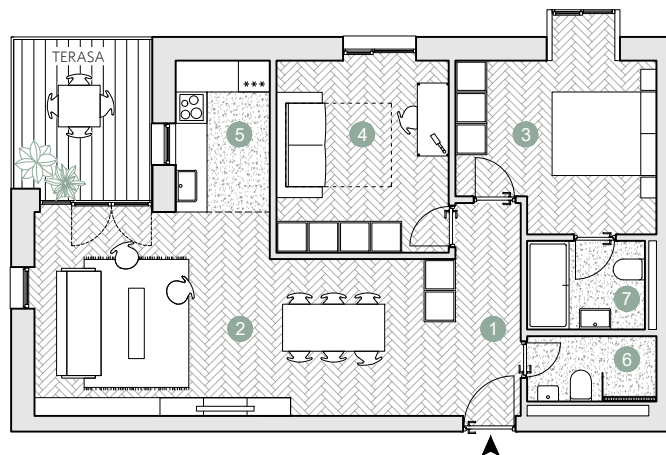
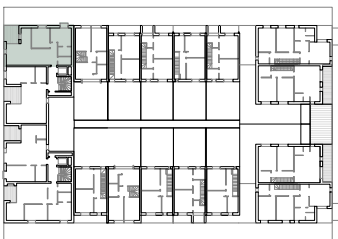
☑ Nr. camere: 3

☑ Nr. bai: 2

☑ Etaj: 2 / 4

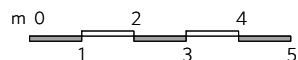
☑ Suprafata construita locuinta = 87.6 m²

☑ Suprafata construita totala = 95.8 m²



 Prime Kapital

 adn
BIROU ARHITECTURA



ETAJ 2

Suprafete utile:

| | |
|--------------------|---------------------|
| 1. hol intrare | 5.2 m ² |
| 2. living & dining | 26.4 m ² |
| 3. dormitor | 12.7 m ² |
| 4. dormitor | 12.2 m ² |
| 5. bucatarie | 6.7 m ² |
| 6. baie | 2.8 m ² |
| 7. baie | 4.0 m ² |

.....
Total suprafete utile etaj 2 70.0 m²

Terasa 8.2 m²