

The Urban A15

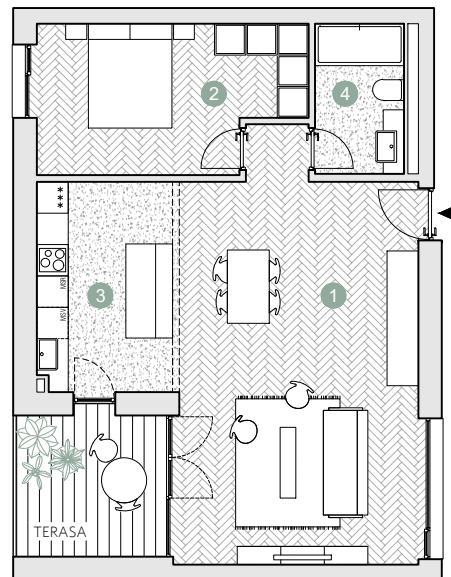
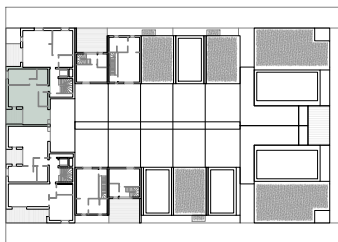
☑ Nr. camere: 2

☑ Nr. bai: 1

☑ Etaj: 3 / 4

☑ Suprafata construita locuinta = 78.5 m²

☑ Suprafata construita totala = 86.5 m²



ETAJ 3

Suprafete utile:

1. living	35.7 m ²
2. dormitor	13.5 m ²
3. bucatarie	10.7 m ²
4. baie	4.8 m ²

Total suprafete utile etaj 3 64.7 m²

Terasa 8.0 m²

 Prime Kapital

 adn
BIROU ARHITECTURA

