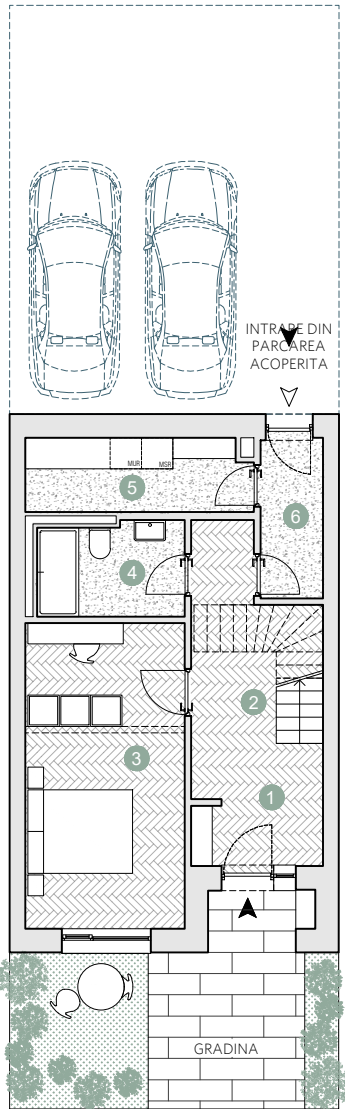


The Townhouse B01

- ☑ Nr. camere: 6
- ☑ Nr. bai: 4
- ☑ Etaj: P + 3
- ☑ Suprafata construita locuinta = 219,8 m²
- ☑ Suprafata construita totala = 290,1 m²



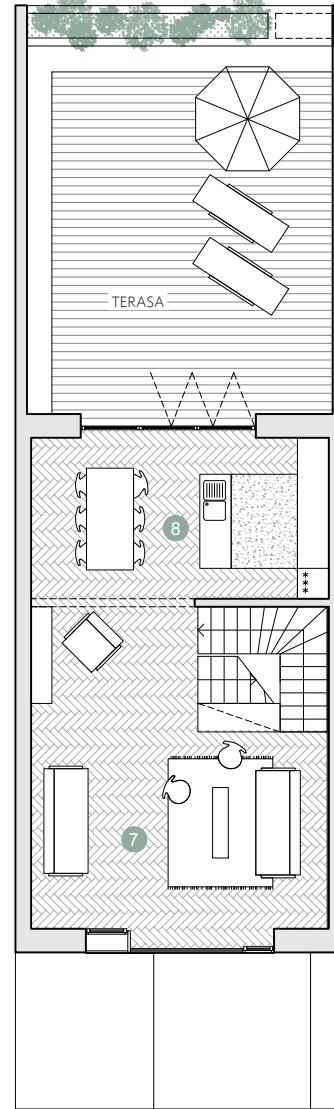
PARTER

Suprafete utile:

1. hol intrare	3.1 m ²
2. coridor	9.4 m ²
3. dormitor	17.4 m ²
4. baie	5.0 m ²
5. spatiu depozitare	5.9 m ²
6. sas	3.5 m ²

Total suprafete utile parter 44.3 m²

Gradina 20.4 m²



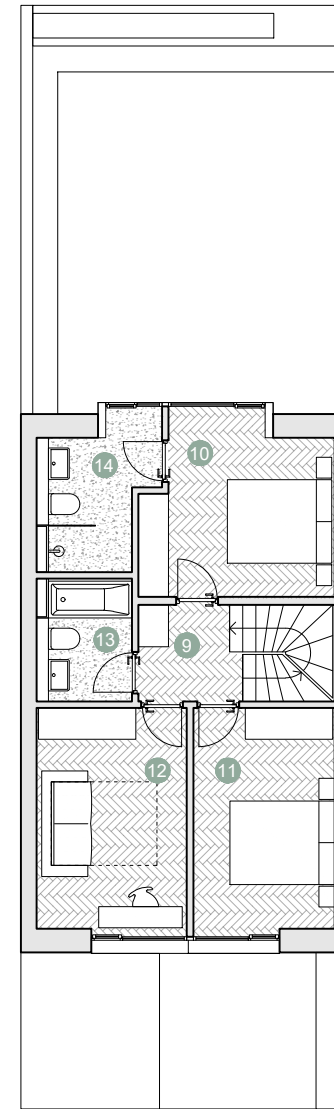
ETAJUL 1

Suprafete utile:

7. living & spatiu de lucru & scara	33.0 m ²
8. bucatarie&depozitare	17.5 m ²

Total suprafete utile etaj 1 50.5 m²

Terasa 46.0 m²



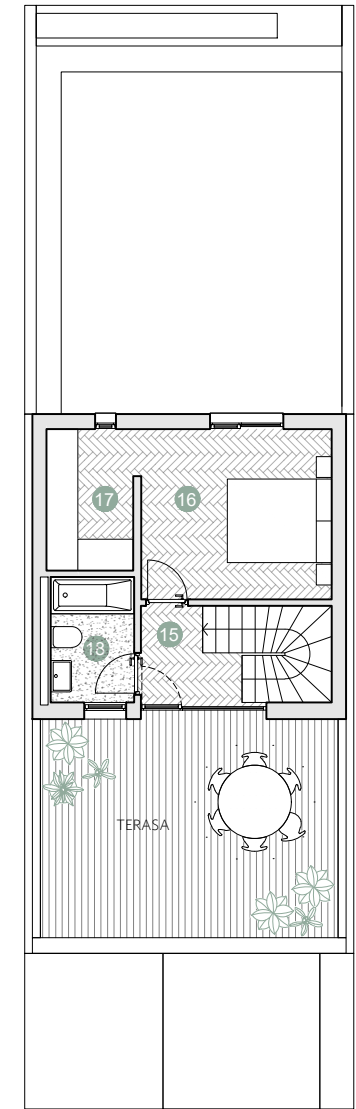
ETAJUL 2

Suprafete utile:

9. coridor & scara	6.8 m ²
10. dormitor	12.0 m ²
11. dormitor	11.0 m ²
12. dormitor	11.8 m ²
13. baie	5.4 m ²
14. baie	3.8 m ²

Total suprafete utile etaj 2 50.8 m²

Terasa 24.3 m²



ETAJUL 3

Suprafete utile:

15. coridor & scara	6.9 m ²
16. dormitor	11.6 m ²
17. dressing	4.4 m ²
18. baie	3.8 m ²

Total suprafete utile etaj 3 26.7 m²

Terasa 24.3 m²

Prime Kapital

adn
BIROU DE INTELIGENTA

