

The Townhouse B02

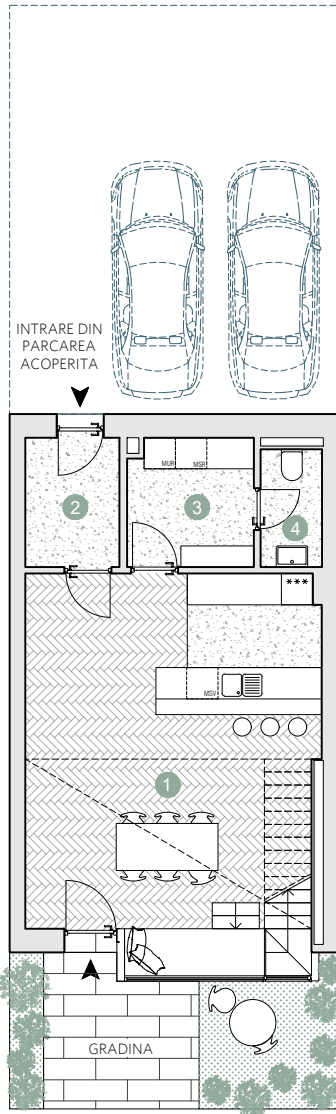
- ☑ Nr. camere: 5

- ☑ Nr. bai: 3

- ☑ Etaj: P + 3

- ☑ Suprafata construita locuinta = 232,9 m²

- ☑ Suprafata construita totala = 285,7 m²



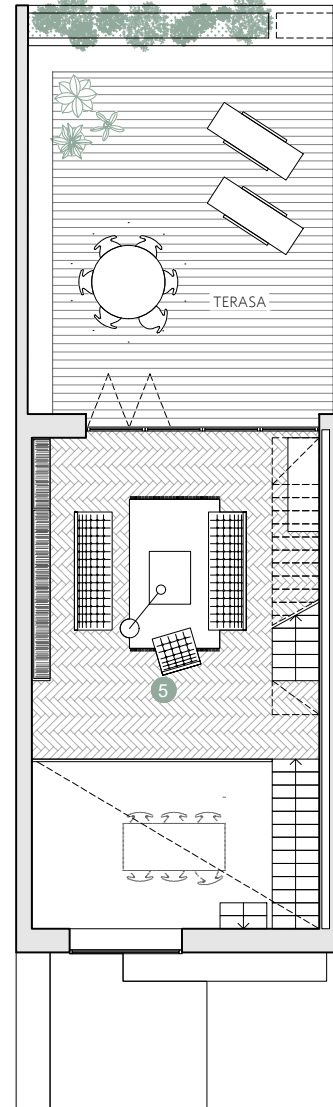
PARTER

Suprafete utile:

1. bucatarie+dining	39.7 m ²
2. sas	4.3 m ²
3. spatiu depozitare	5.8 m ²
4. grup sanitar	2.6 m ²

Total suprafete utile parter 52.4 m²

Gradina 16.2 m²



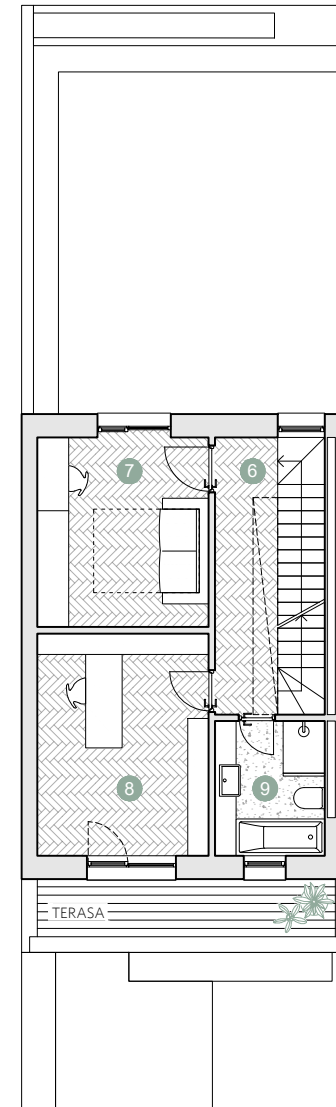
ETAJUL 1

Suprafete utile:

5. living & scara	33.9 m ²
-------------------	---------------------

Total suprafete utile etaj 1 33.9 m²

Terasa 46.3 m²



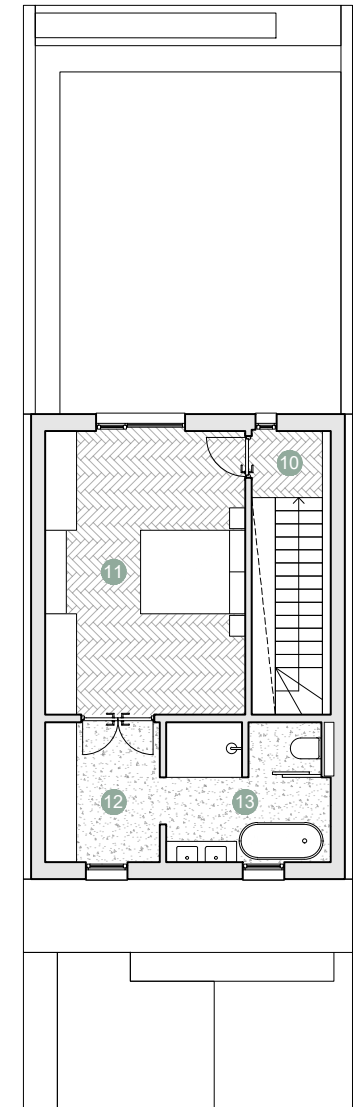
ETAJUL 2

Suprafete utile:

6. coridor & scara	10.9 m ²
7. dormitor	12.0 m ²
8. spatiu de lucru	13.8 m ²
9. baie	5.3 m ²

Total suprafete utile etaj 2 42.0 m²

Terasa 6.5 m²



ETAJUL 3

Suprafete utile:

10. coridor	5.5 m ²
11. dormitor	20.8 m ²
12. dressing	5.9 m ²
13. baie	7.9 m ²

Total suprafete utile etaj 3 40.1 m²

Prime Kapital

adn
BIROU ARCHITECTURA

