

The Townhouse B03

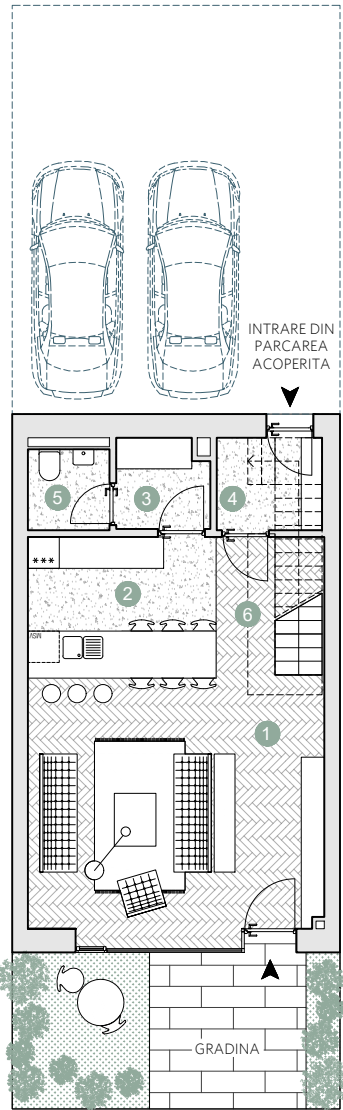
- ☑ Nr. camere: 5

- ☑ Nr. bai: 3

- ☑ Etaj: P + 2

- ☑ Suprafata construita locuinta = 166.7 m²

- ☑ Suprafata construita totala = 219.8 m²



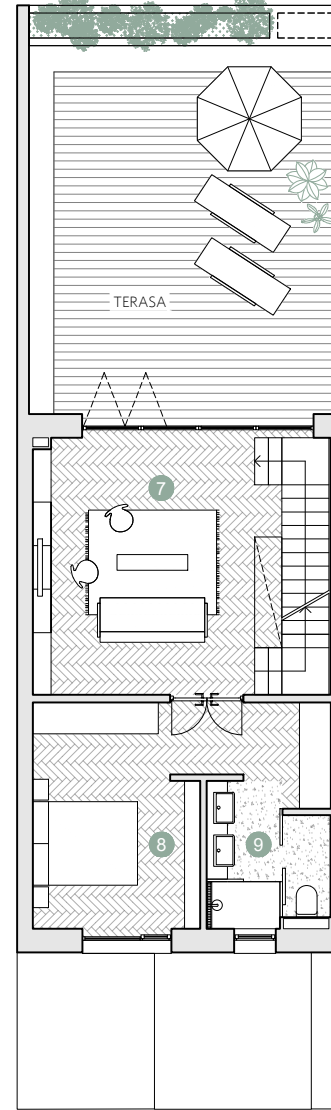
PARTER

Suprafete utile:

1. hol intrare & living	28.2 m ²
2. bucatarie & dining	9.7 m ²
3. spatiu depozitare	3.0 m ²
4. sas	3.5 m ²
5. baie	2.4 m ²
6. coridor	3.6 m ²

Total suprafete utile parter 50.4 m²

Gradina 17.8 m²



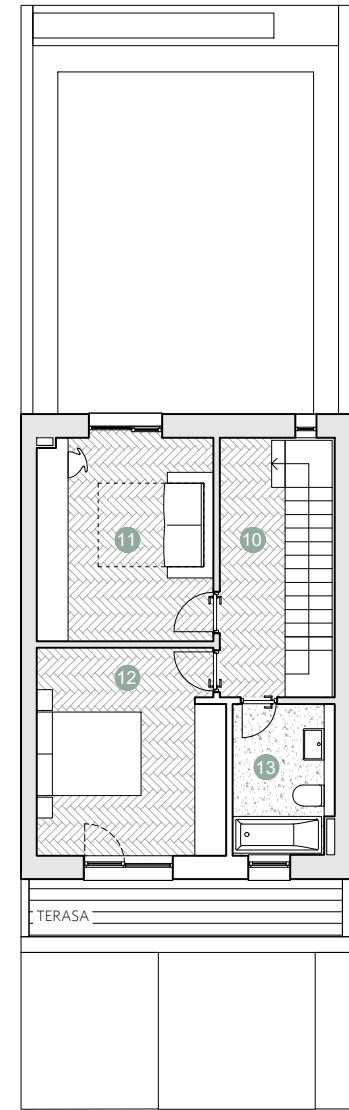
ETAJUL 1

Suprafete utile:

7. living & scara	27.0 m ²
8. dormitor	15.0 m ²
9. baie & depozitare	8.7 m ²

Total suprafete utile etaj 2 50.7 m²

Terasa 46.3 m²



ETAJUL 2

Suprafete utile:

10. coridor & scara	10.1 m ²
11. dormitor	13.0 m ²
12. dormitor	14.7 m ²
13. baie	5.0 m ²

Total suprafete utile etaj 3 42.8 m²

Terasa 6.8 m²

Prime Kapital

adn
BIROU ARHITECTURA

