

The Townhouse B04

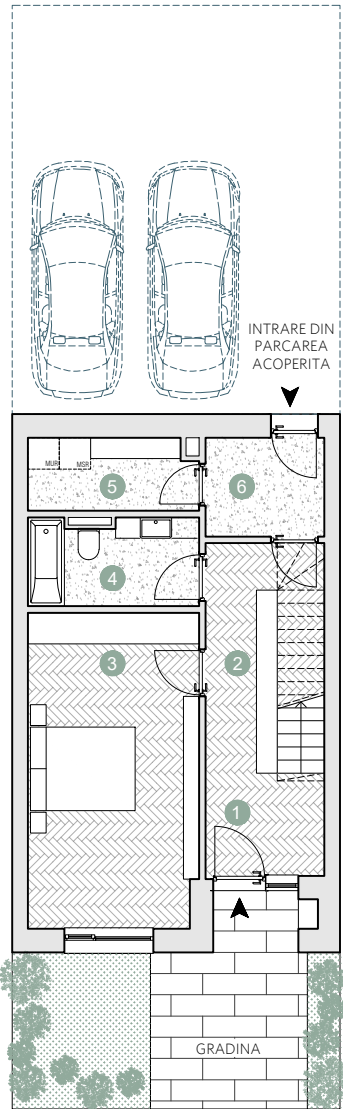
- ☑ Nr. camere: 4

- ☑ Nr. bai: 3

- ☑ Etaj: P + 2

- ☑ Suprafata construita locuinta = 180.6 m²

- ☑ Suprafata construita totala = 231.9 m²



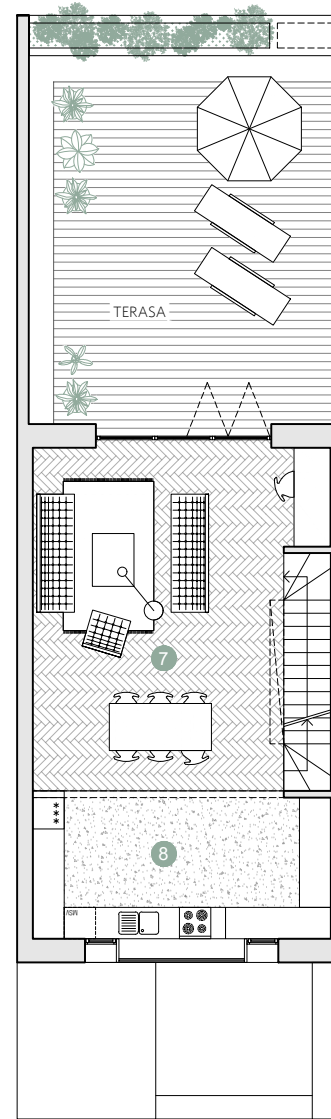
PARTER

Suprafete utile:

1. hol intrare	4.7 m ²
2. coridor	8.1 m ²
3. dormitor	19.4 m ²
4. baie	5.3 m ²
5. spatiu depozitare	4.2 m ²
6. sas	3.9 m ²

Total suprafete utile parter 45.6 m²

Gradina 17.8 m²



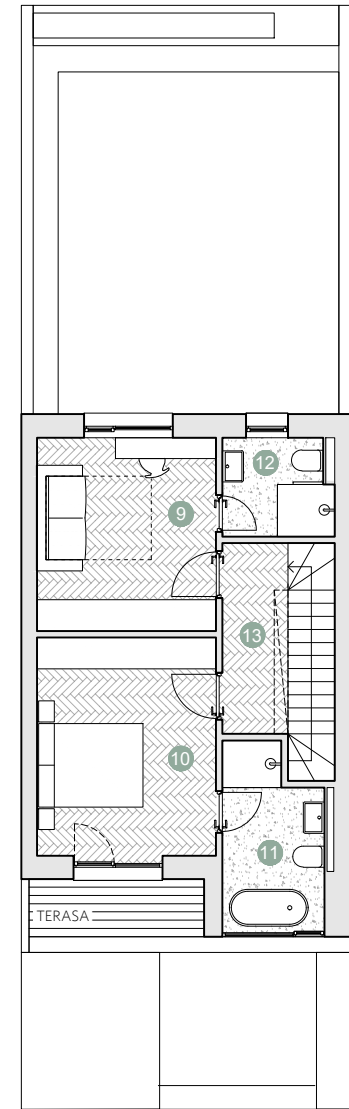
ETAJUL 1

Suprafete utile:

7. living & spatiu de lucru & scara	36.9 m ²
8. bucatarie & depozitare	15.5 m ²

Total suprafete utile etaj 1 52.4 m²

Terasa 47.2 m²



ETAJUL 2

Suprafete utile:

9. dormitor	14.3 m ²
10. dormitor	12.8 m ²
11. baie	6.0 m ²
12. baie	3.9 m ²
13. coridor & scara	7.7

Total suprafete utile etaj 2 44.7 m²

Terasa 4.1 m²

Prime Kapital

adn
BIROU ARHITECTURA

