

The Parkview C01

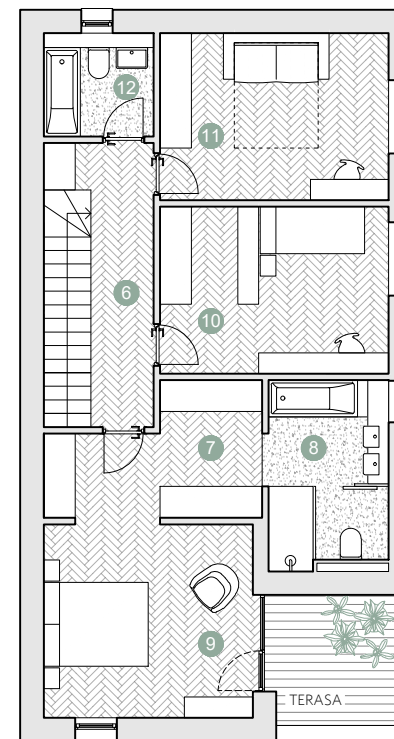
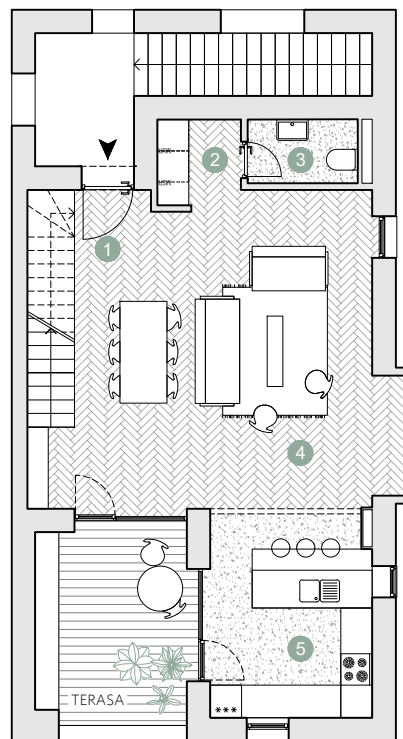
☑ Nr. camere: 4

☑ Nr. bai: 3

☑ Etaj: 1 + 2 (duplex) / 2

☑ Suprafata construita locuinta = 156.2 m²

☑ Suprafata construita totala = 175.3m²



ETAJ 1

Suprafete utile:

| | |
|-----------------|---------------------|
| 1. hol intrare | 2.7 m ² |
| 2. depozitare | 2.8 m ² |
| 3. grup sanitar | 2.5 m ² |
| 4. living | 36.4 m ² |
| 5. bucatarie | 12.4 m ² |

.....
Total suprafete utile etaj 1 56.8 m²

Terasa 12.0 m²

ETAJ 2

Suprafete utile:

| | |
|----------------|---------------------|
| 6. hol & scara | 11.2 m ² |
| 7. depozitare | 5.2 m ² |
| 8. baie | 8.3 m ² |
| 9. dormitor | 18.2 m ² |
| 10. dormitor | 14.0 m ² |
| 11. dormitor | 14.0 m ² |
| 12. baie | 4.1 m ² |

.....
Total suprafete utile etaj 2 75.0 m²

Terasa 7.1 m²

 Prime Kapital

 adn
BIROU ARHITECTURA

