

**The Parkview**
  
**C02**

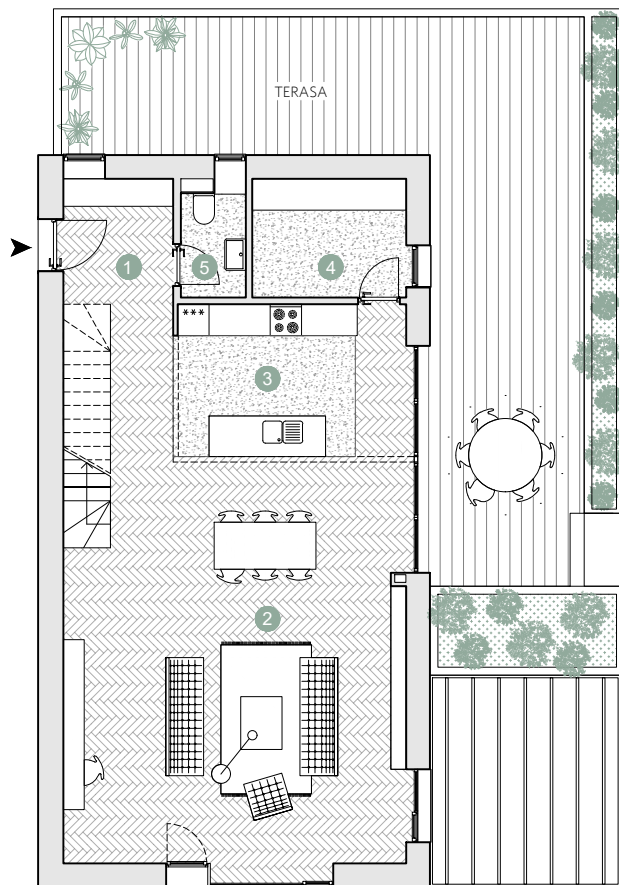
☑ Nr. camere: 4

☑ Nr. bai: 3

☑ Etaj: 1 + 2 (duplex) / 2

☑ Suprafata construita locuinta = 189.1 m<sup>2</sup>

☑ Suprafata construita totala = 257.7 m<sup>2</sup>



**ETAJUL 1**

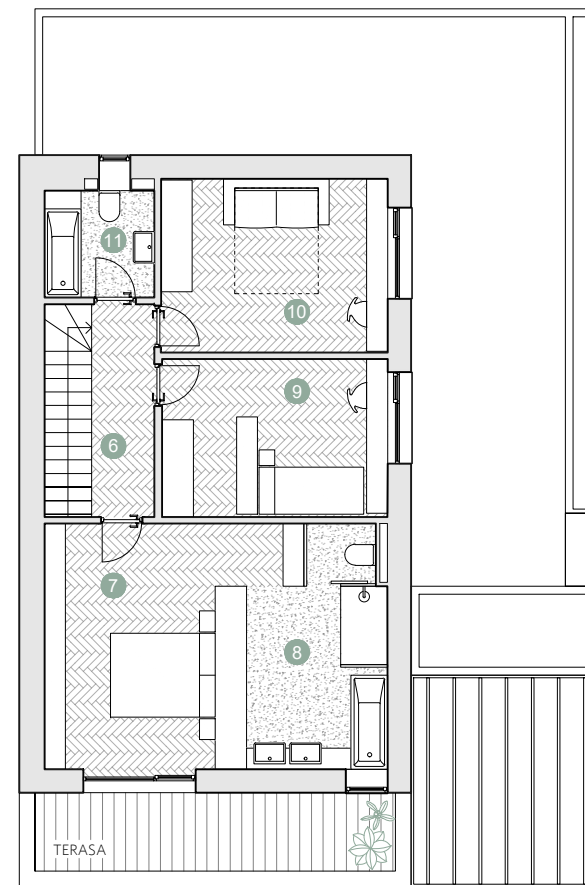
Suprafete utile:

1. hol intrare	12.8 m <sup>2</sup>
2. living	48.6 m <sup>2</sup>
3. bucatarie	13.1 m <sup>2</sup>
4. depozitare	6.7 m <sup>2</sup>
5. grup sanitar	2.5 m <sup>2</sup>

.....

Total suprafete utile etaj 1      83.7 m<sup>2</sup>

**Terasa**      **58.3 m<sup>2</sup>**



**ETAJUL 2**

Suprafete utile:

6. hol & scara	8.6 m <sup>2</sup>
7. dormitor	19.4 m <sup>2</sup>
8. baie	11.1 m <sup>2</sup>
9. dormitor	13.0 m <sup>2</sup>
10. dormitor	14.2 m <sup>2</sup>
11. baie	4.4 m <sup>2</sup>

.....

Total suprafete utile etaj 2      70.7 m<sup>2</sup>

**Terasa**      **10.3 m<sup>2</sup>**





