

The Parkview
C03

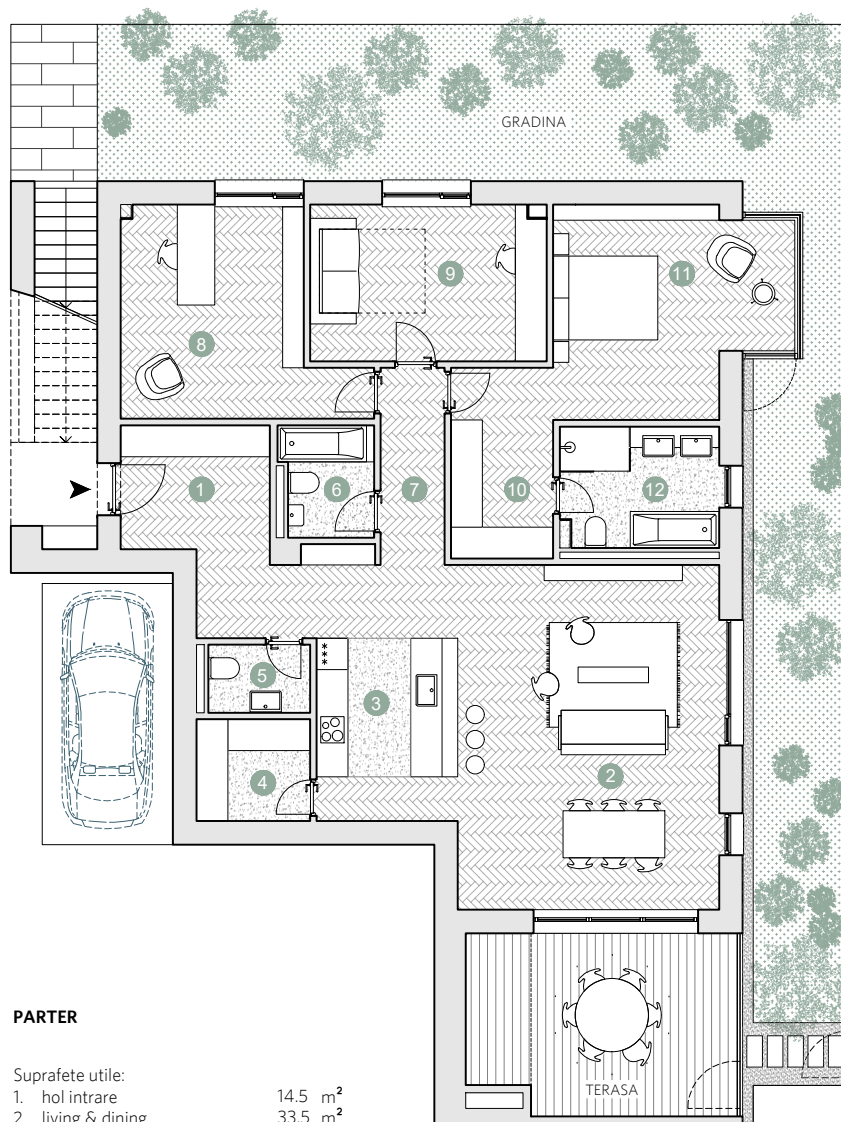
☑ Nr. camere: 4

☑ Nr. bai: 3

☑ Etaj: P / 2

☑ Suprafata construita locuinta = 165.2 m²

☑ Suprafata construita totala = 182.8 m²



PARTER

Suprafete utile:

1. hol intrare	14.5 m ²
2. living & dining	33.5 m ²
3. bucatarie	9.5 m ²
4. spatiu depozitare	4.1 m ²
5. grup sanitar	2.4 m ²
6. baie	3.7 m ²
7. coridor	4.6 m ²
8. spatiu de lucru	15.4 m ²
9. dormitor	13.4 m ²
10. dressing	7.6 m ²
11. dormitor	16.3 m ²
12. baie	7.0 m ²

.....
 Total suprafete utile 132.0 m²

Gradina 75.9 m²
Terasa 17.6 m²




 DIZAIN ARHITECTURA

