

The Villa H1a

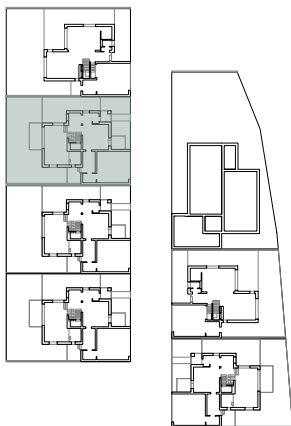
☑ Nr. camere: 5

☑ Nr. bai: 4

☑ Etaj: P + 2 + supanta

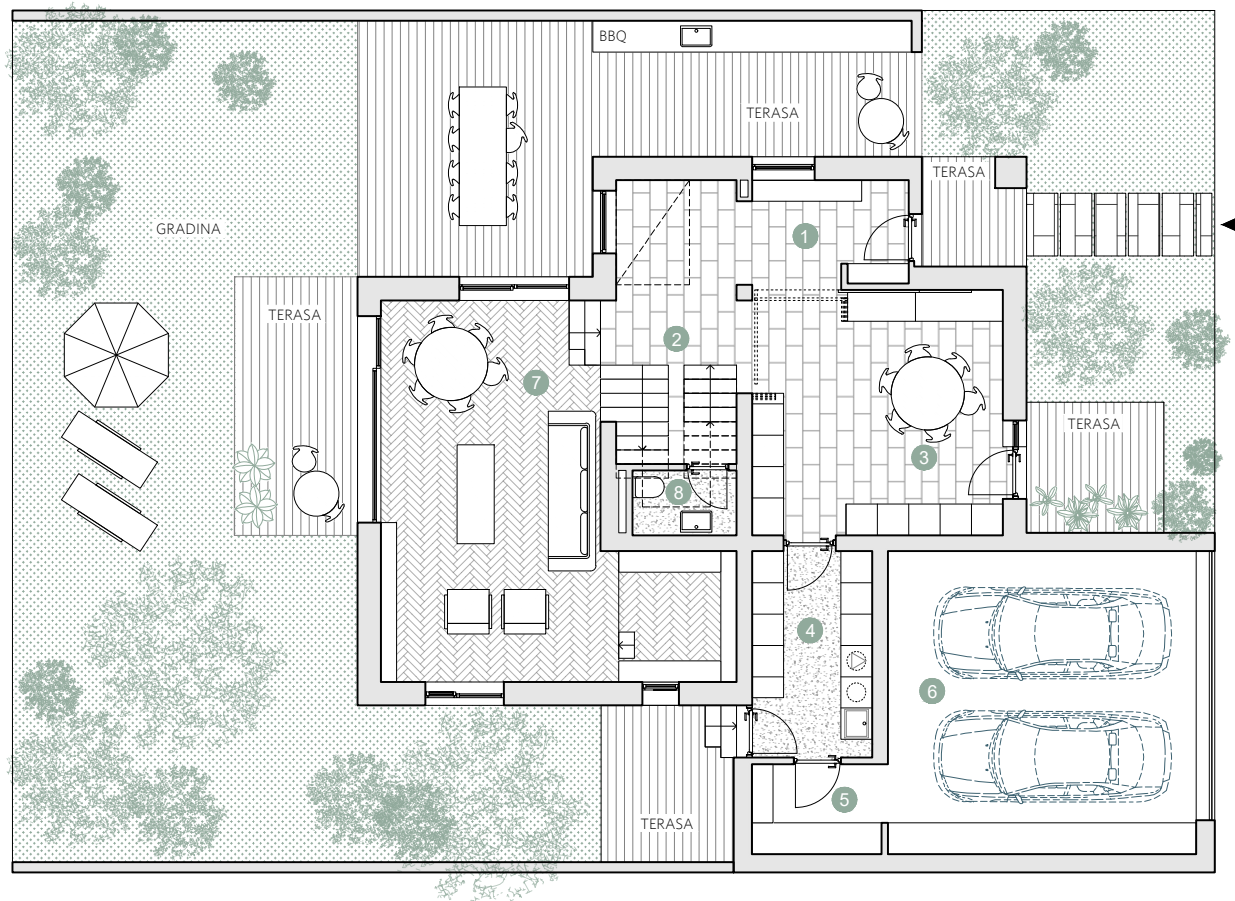
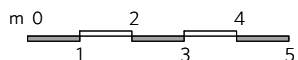
☑ Suprafata construita locuinta = 363,3 m²

☑ Suprafata construita totala = 479,7 m²



Prime Kapital

adn
DITOU DINTRECEUTA



PARTER

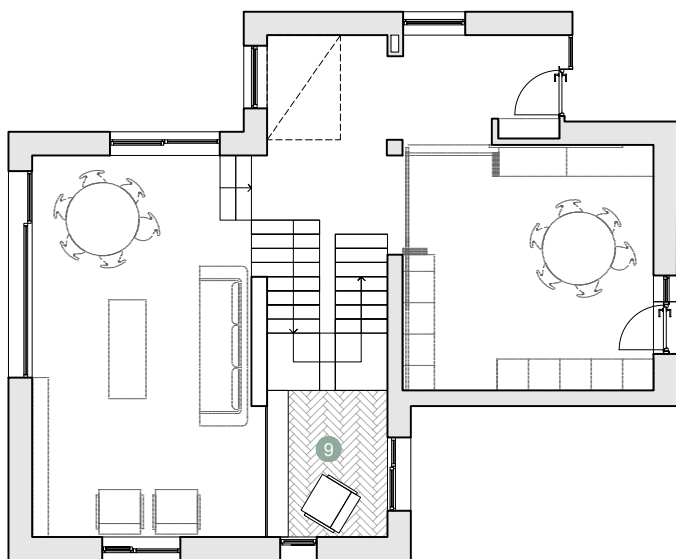
Suprafete utile:

1. hol intrare	11.2 m ²
2. coridor	6.7 m ²
3. bucatarie	23.5 m ²
4. spatiu depozitare	9.0 m ²
5. sas	4.4 m ²
6. garaj	36.0 m ²
7. living & loc hobby	37.7 m ²
8. baie	2.3 m ²

.....
Total suprafete utile parter 130.8 m²

**Gradina
Terase**

**144.4 m²
69.2 m²**

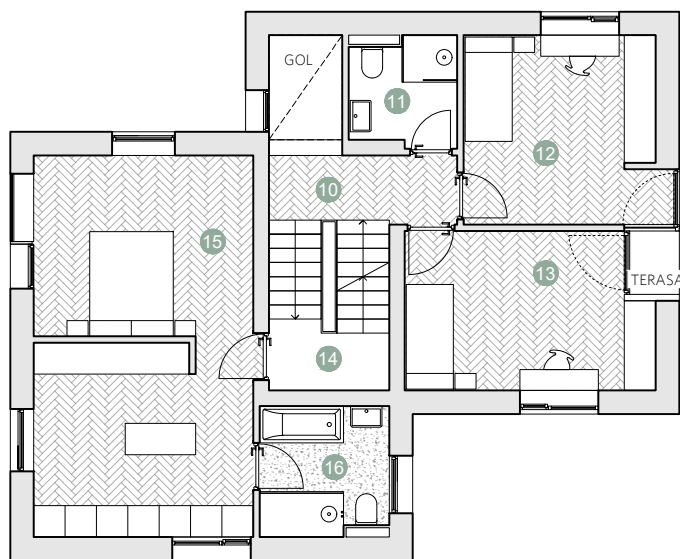


SUPANTA

Suprafete utile:

9. spatiu lucru 6.4 m²

.....
Total suprafete utile supanta 6.4 m²

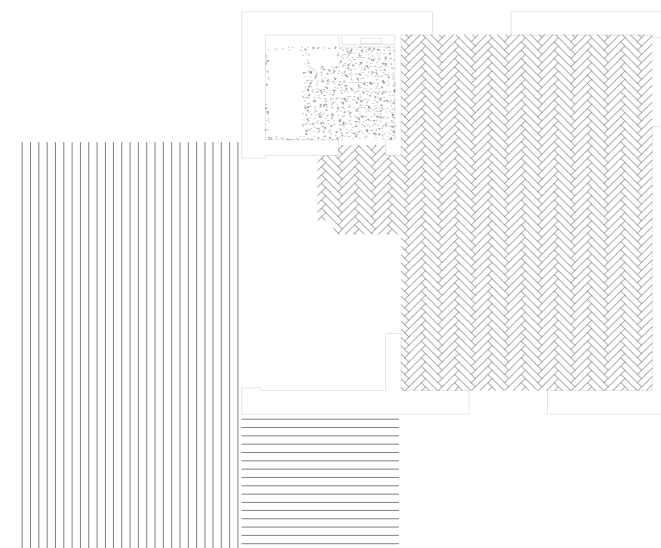


ETAJ 1

Suprafete utile:

10. sas & scara 9.3 m²
11. baie 4.1 m²
12. dormitor 13.6 m²
13. dormitor 13.8 m²
14. sas 2.8 m²
15. dormitor & dressing 31.1 m²
16. baie 6.2 m²

.....
Total suprafete utile etaj 1 80.9 m²



ETAJ 2

Suprafete utile:

17. spatiu hobby 36.9 m²
18. baie 4.7 m²
19. sas & scara 7.2 m²

.....
Total suprafete utile etaj 2 48.8 m²

Terasa 47.2 m²