

The Villa H1b

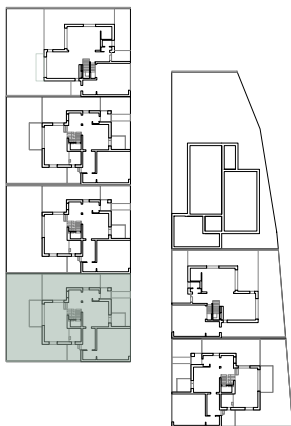
☑ Nr. camere: 5

☑ Nr. bai: 4

☑ Etaj: P + 2 + supanta

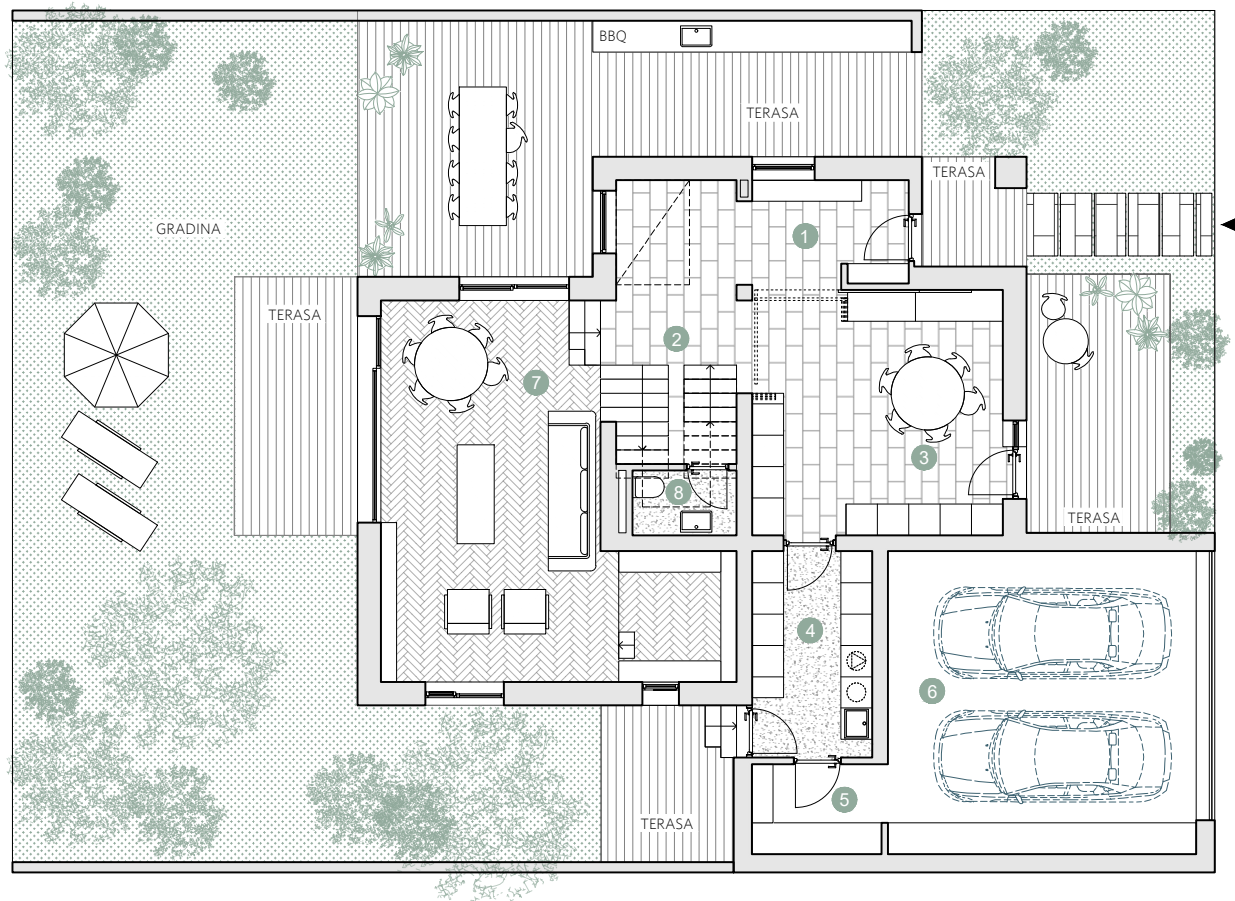
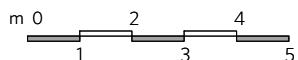
☑ Suprafata construita locuinta = 368,9 m²

☑ Suprafata construita totala = 491,0 m²



Prime Kapital

adn
DIZOUL DINTREGRITATE



PARTER

Suprafete utile:

1. hol intrare	11.2 m ²
2. coridor	6.7 m ²
3. bucatarie	23.5 m ²
4. spatiu depozitare	9.0 m ²
5. sas	4.4 m ²
6. garaj	36.0 m ²
7. living & loc hobby	37.7 m ²
8. baie	2.3 m ²

Total suprafete utile parter 130.8 m²

Gradina
Terase

137.1 m²
75.6 m²

