

The Villa H2a

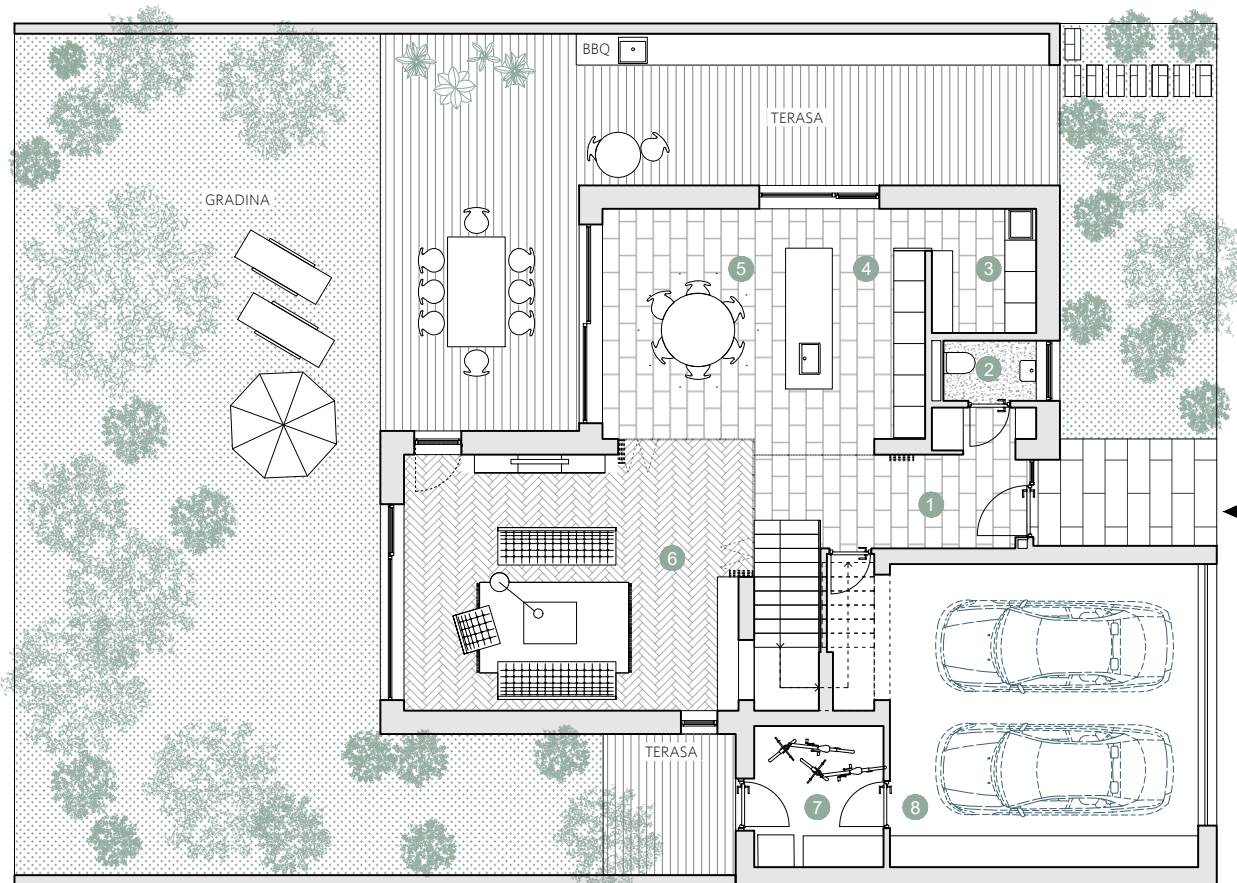
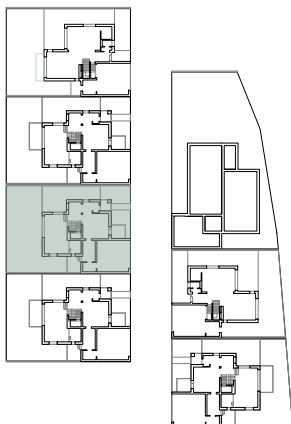
☑ Nr. camere: 5

☑ Nr. bai: 4

☑ Etaj: P + 2

☑ Suprafata construita locuinta = 343.8 m²

☑ Suprafata construita totala = 411.5 m²



PARTER

Suprafete utile:

1. hol intrare	10.9 m ²
2. baie	2.0 m ²
3. spatiu depozitare	4.6 m ²
4. bucatarie	12.7 m ²
5. dining	17.5 m ²
6. living & spatiu lucru	31.7 m ²
7. spatiu tehnic	6.8 m ²
8. garaj	39.6 m ²

.....
Total suprafete utile parter 125.8 m²

Gradina
Terase

149.4 m²
67.7 m²

Prime Kapital

adn
BIROU DE ARHITECTURA

