

## The Urban 2RC

☑ Nr. camere: 2

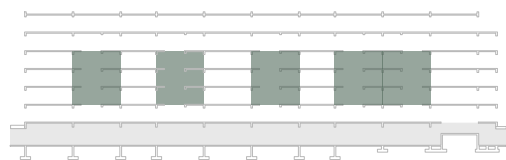
☑ Nr. bai: 1

☑ Etaj: 1-3 / 4

☑ Cladire: A1c

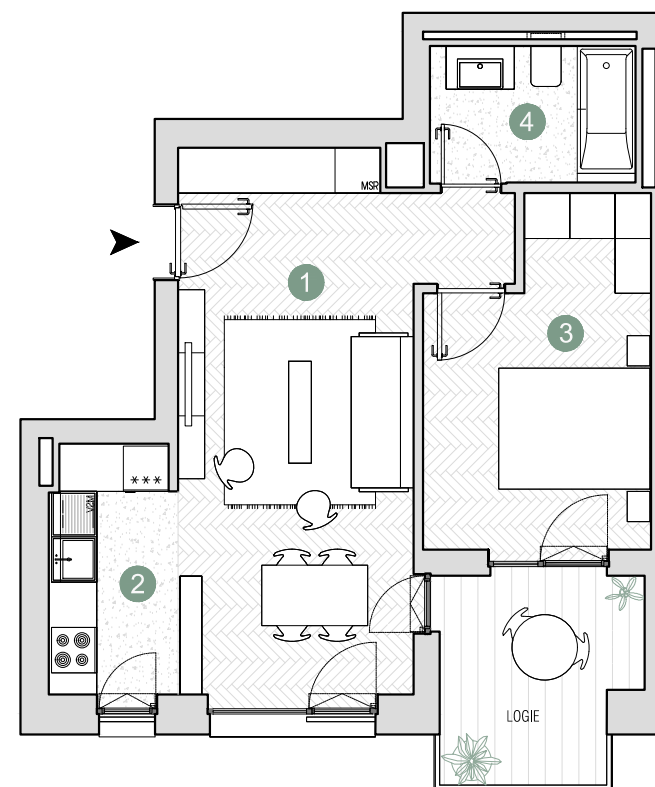
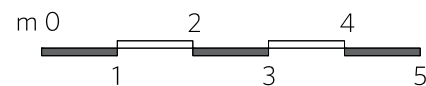
☑ Suprafata construita locuinta = 59.5 m<sup>2</sup>

☑ Suprafata construita totala = 66.6 m<sup>2</sup>



 **Prime Kapital**

 **adn**  
BIROU ARCHITECTURA



Suprafete utile:

1. living & dining	24.0 m <sup>2</sup>
2. bucatarie	6.2 m <sup>2</sup>
3. dormitor	12.7 m <sup>2</sup>
4. baie	4.8 m <sup>2</sup>

.....  
Total suprafata utila 47.7 m<sup>2</sup>

Logie 7.2 m<sup>2</sup>