

The Urban 4DXE

✓ Nr. camere: 4

✓ Nr. bai: 2

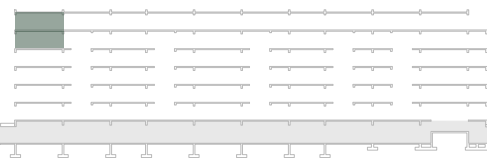
✓ Etaj: 4 / 4

✓ Cladire: A1c

✓ Suprafata utila totala = 114.0 m²

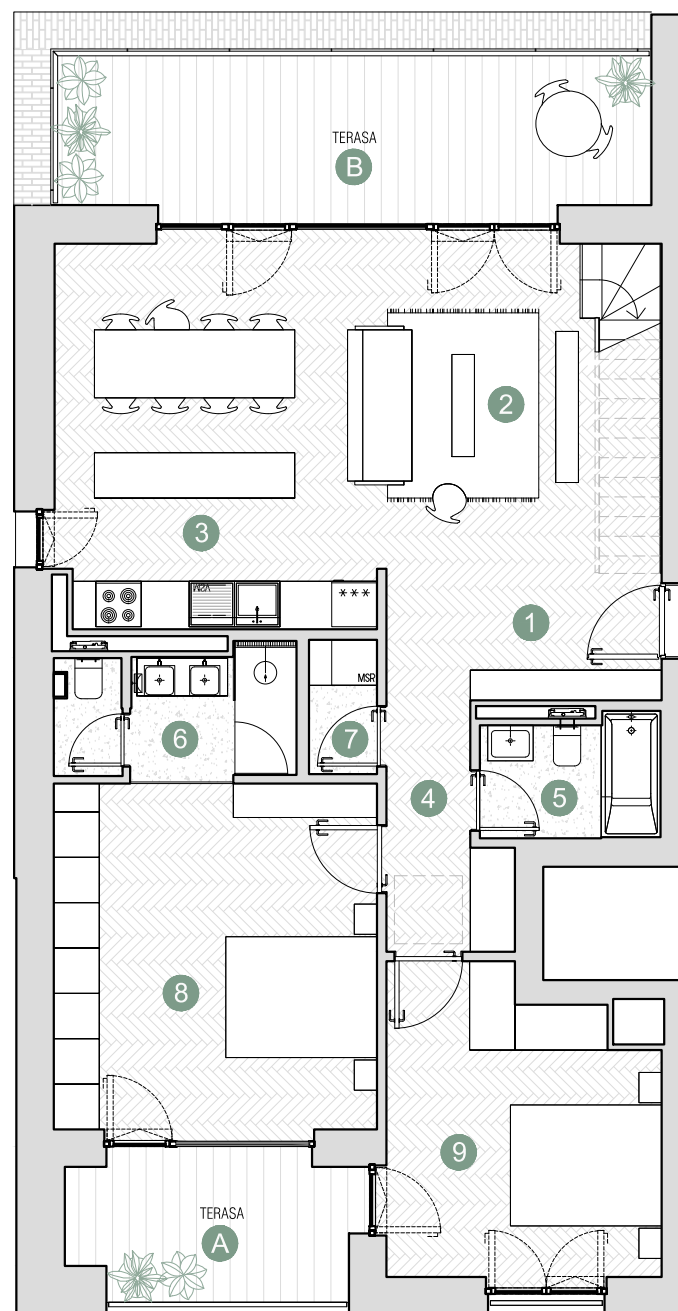
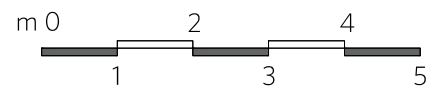
✓ Suprafata construita locuinta = 166.7 m²

✓ Suprafata construita totala = 173.7 m²



Prime Kapital

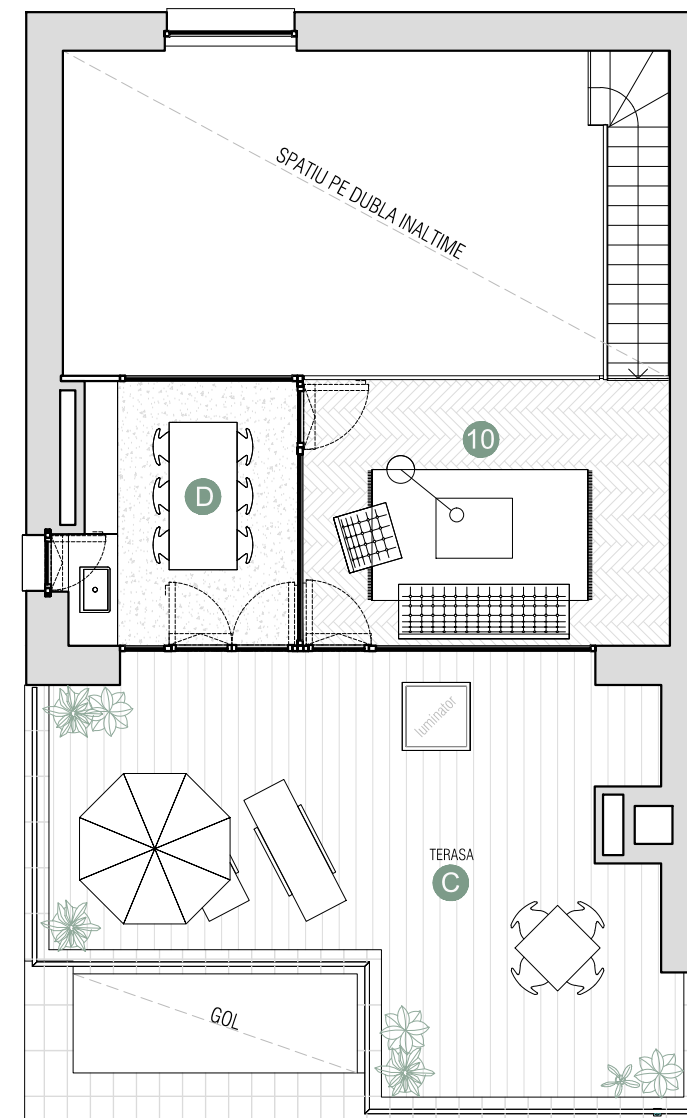
adn
BUREAU ARCHITECTURAL



ETAJ 1

Suprafete utile:

1. hol intrare & scara	10.1 m ²
2. living	18.3 m ²
3. bucatarie & dining	18.8 m ²
4. hol	4.5 m ²
5. baie	3.8 m ²
6. baie	5.3 m ²
7. depozitare	1.6 m ²
8. dormitor	19.9 m ²
9. dormitor	14.0 m ²
Total suprafata utila	96.3 m ²



ETAJ 2

Suprafete utile:

10. supanta	17.7 m ²
Total suprafata utila	17.7 m ²

Terasa	A	7.4 m ²
Terasa	B	18.1 m ²
Terasa	C	40.6 m ²
Terasa acoperita	D	10.4 m ²