

## The Urban 4DXF

✓ Nr. camere: 4

✓ Nr. bai: 2

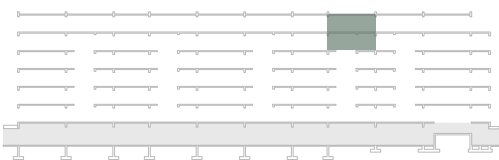
✓ Etaj: 4 / 4

✓ Cladire: A1c

✓ Suprafata utila totala = 98.3 m<sup>2</sup>

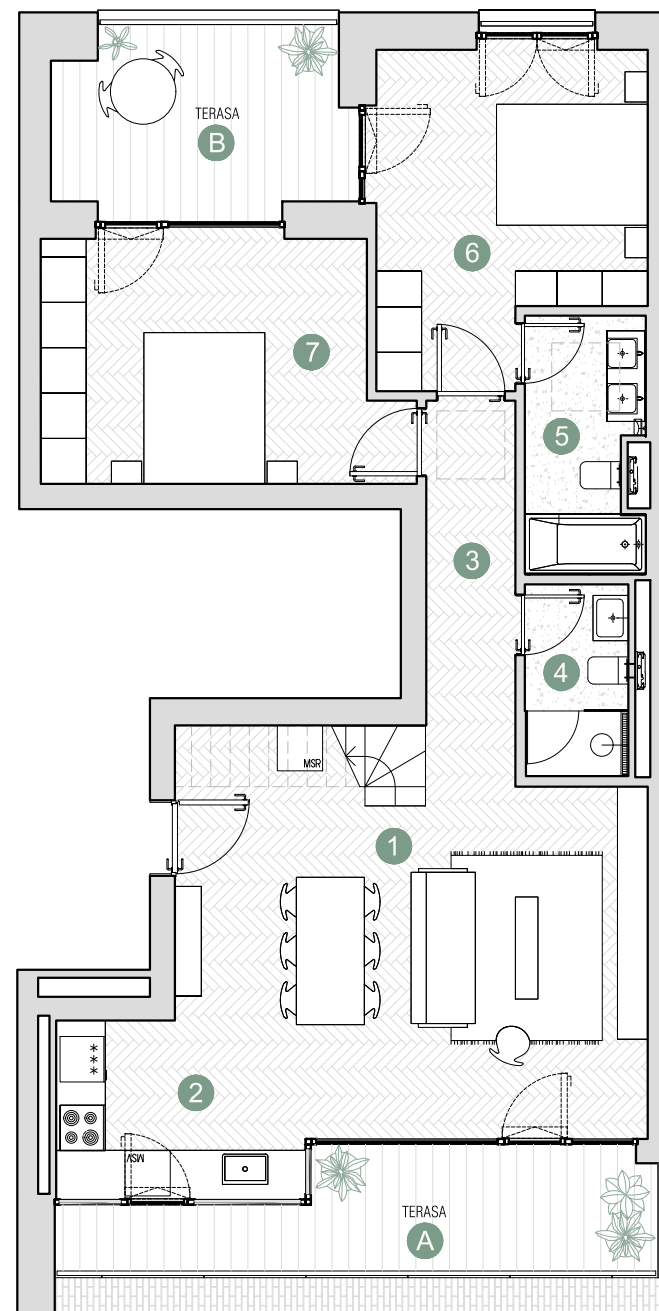
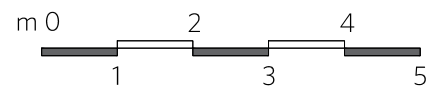
✓ Suprafata construita locuinta = 156.5 m<sup>2</sup>

✓ Suprafata construita totala = 165.7 m<sup>2</sup>



**Prime Kapital**

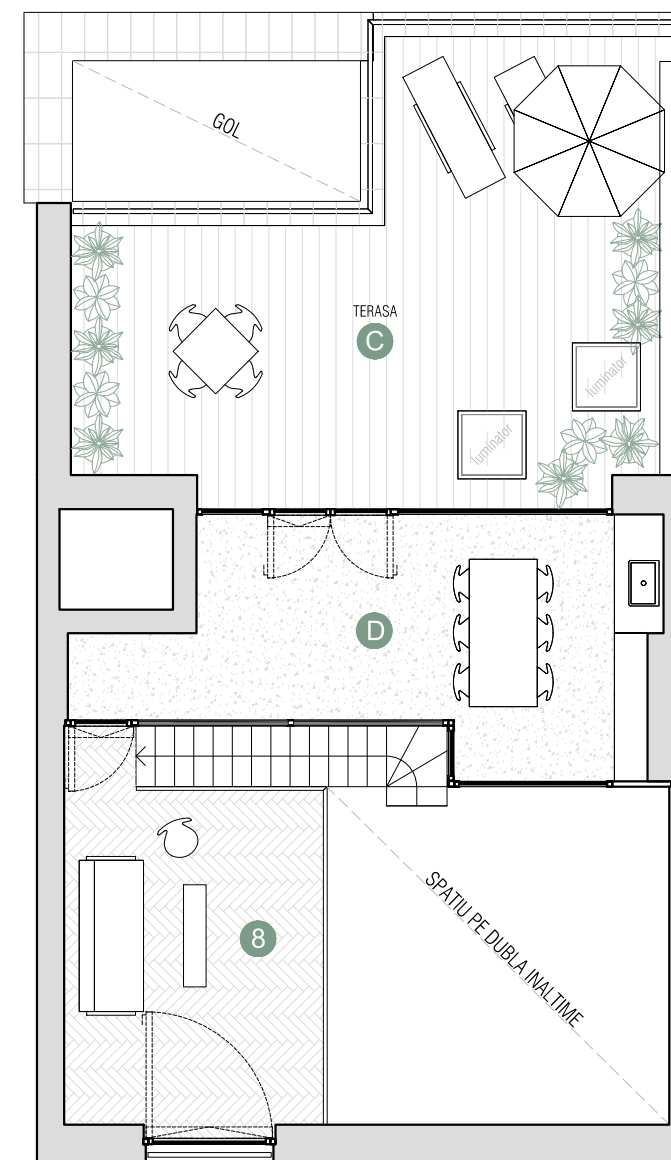
**adn**  
arhitectură



ETAJ 1

Suprafete utile:

1. living & dining & scara	30.9 m <sup>2</sup>
2. bucatarie	7.9 m <sup>2</sup>
3. hol	5.1 m <sup>2</sup>
4. baie	3.5 m <sup>2</sup>
5. baie	5.1 m <sup>2</sup>
6. dormitor	14.7 m <sup>2</sup>
7. dormitor	15.1 m <sup>2</sup>
Total suprafata utila	82.3 m <sup>2</sup>



ETAJ 2

Suprafete utile:

8. supanta	16.0 m <sup>2</sup>
Total suprafata utila	16.0 m <sup>2</sup>
Terasa A	9.5 m <sup>2</sup>
Terasa B	12.1 m <sup>2</sup>
Terasa C	40.1 m <sup>2</sup>
Terasa acoperita D	20.6 m <sup>2</sup>