

## The Urban A12

✓ Nr. camere: 3

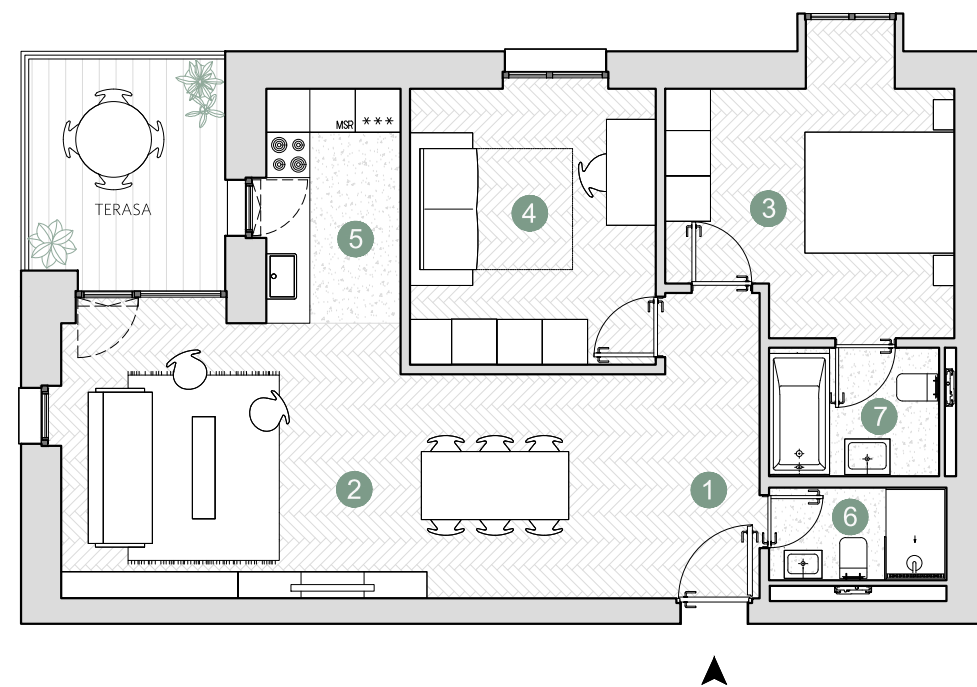
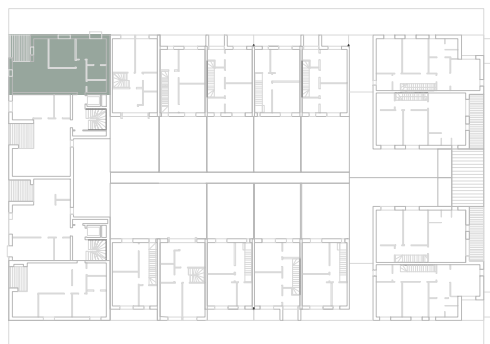
✓ Nr. bai: 2

✓ Etaj: 2 / 4

✓ Cladire: T5

✓ Suprafata construita locuinta = 88.0 m<sup>2</sup>

✓ Suprafata construita totala = 95.8 m<sup>2</sup>



Suprafete utile:

1. hol intrare	5.1 m <sup>2</sup>
2. living & dining	27.5 m <sup>2</sup>
3. dormitor	12.7 m <sup>2</sup>
4. dormitor	12.1 m <sup>2</sup>
5. bucatarie	5.5 m <sup>2</sup>
6. baie	2.9 m <sup>2</sup>
7. baie	3.8 m <sup>2</sup>
<hr/>	
Total suprafata utila	69.6 m <sup>2</sup>
Terasa	7.7 m <sup>2</sup>

 Prime Kapital

 adn  
BIROU ARHITECTURA

