

The Townhouse B02

- ✓ Nr. camere: 5

- ✓ Nr. bai: 3

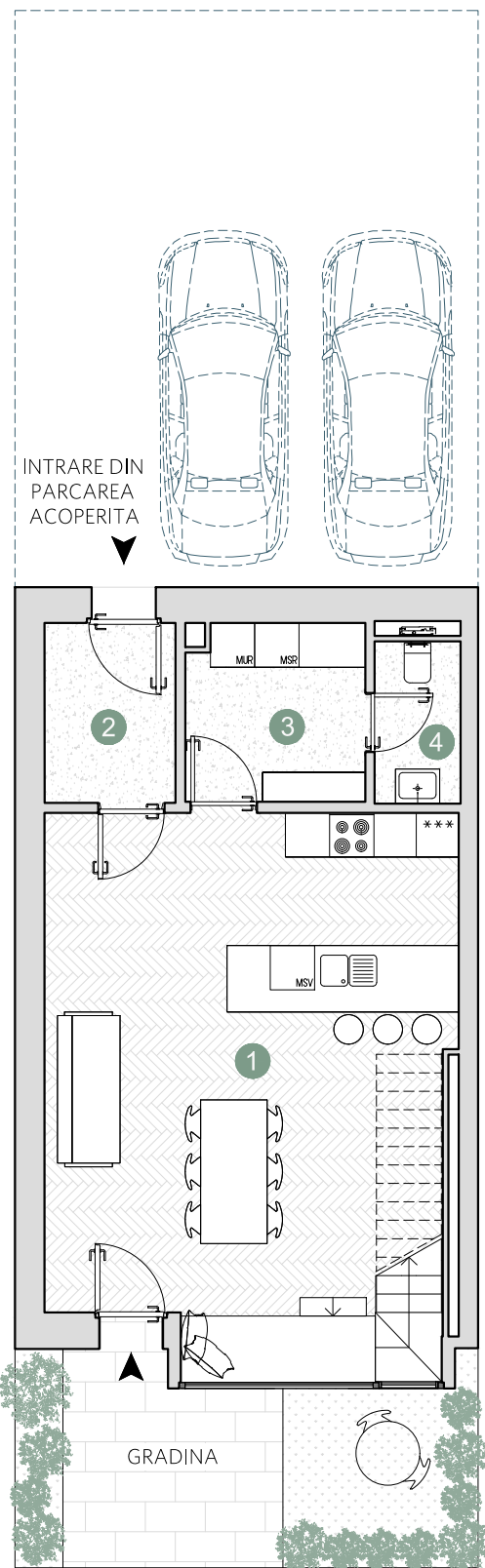
- ✓ Etaj: P+3

- ✓ Cladire: T5

- ✓ Suprafata utila totala = 167.7 m²

- ✓ Suprafata construita locuinta = 221.0 m²

- ✓ Suprafata construita totala = 276.8 m²



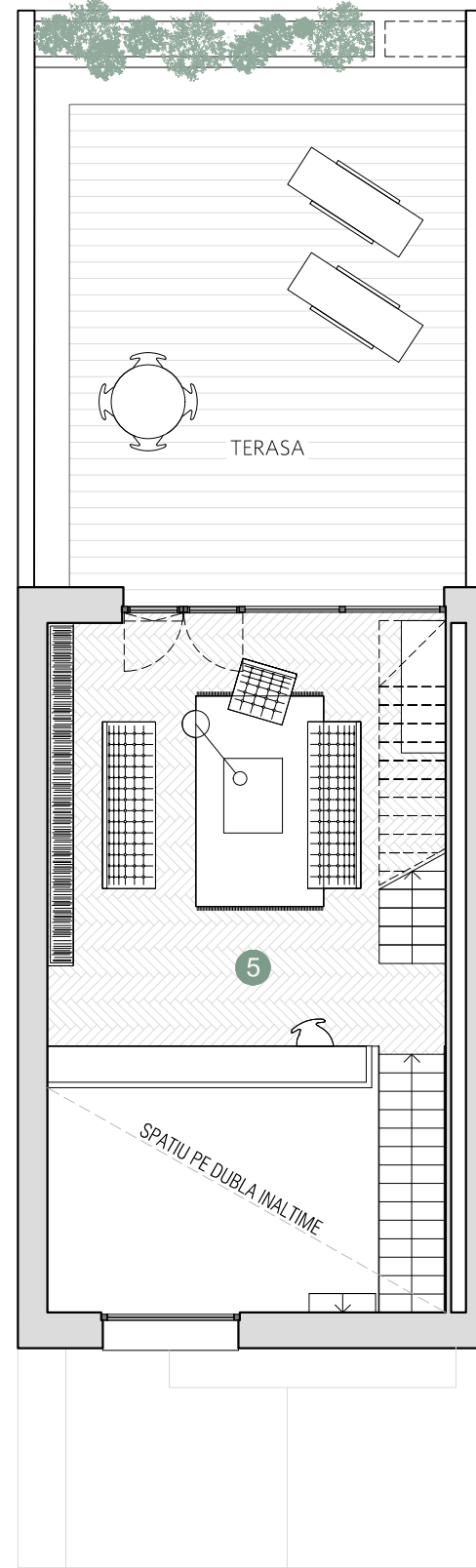
PARTER

Suprafete utile:

1. bucatarie & dining	39.5 m ²
2. sas	4.3 m ²
3. spatiu depozitare	5.8 m ²
4. grup sanitar	2.5 m ²

.....
Total suprafata utila 52.1 m²

Gradina 16.3 m²



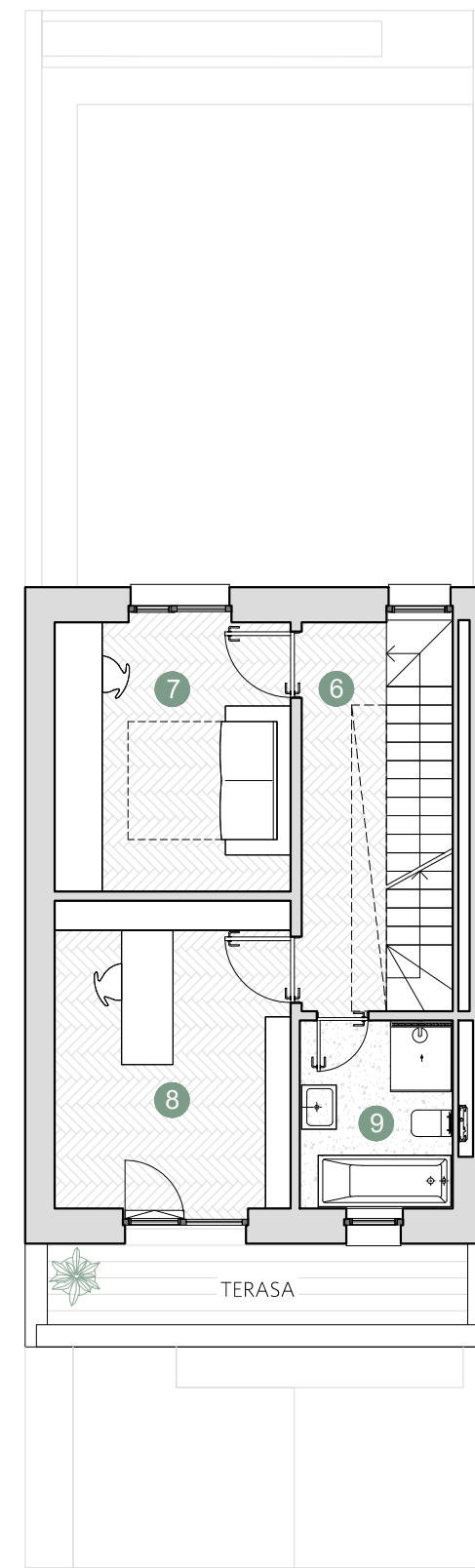
ETAJ 1

Suprafete utile:

5. living & scara	36.0 m ²
-------------------	---------------------

.....
Total suprafata utila 36.0 m²

Terasa 44.5 m²



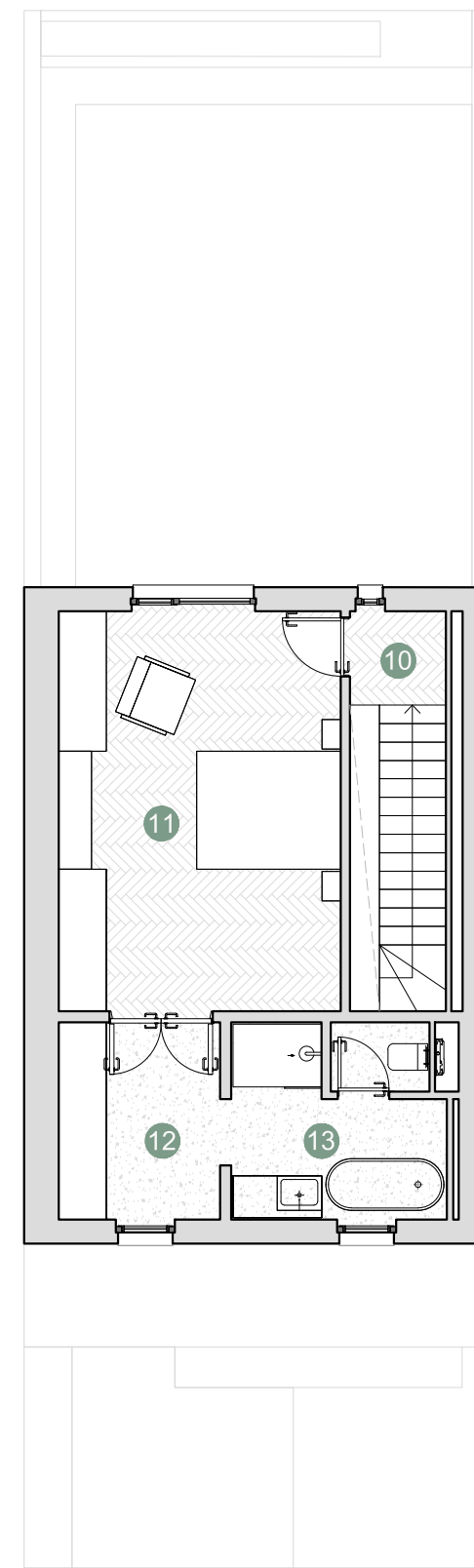
ETAJ 2

Suprafete utile:

6. coridor & scara	9.3 m ²
7. dormitor	12.0 m ²
8. spatiu de lucru	13.4 m ²
9. baie	5.3 m ²

.....
Total suprafata utila 40.0 m²

Terasa 6.5 m²



ETAJ 3

Suprafete utile:

10. coridor & scara	5.4 m ²
11. dormitor	20.9 m ²
12. dressing	5.9 m ²
13. baie	7.3 m ²

.....
Total suprafata utila 39.5 m²

Prime Kapital

adn
BIROU ARHITECTURA

