

## The Townhouse B03

✓ Nr. camere: 5

✓ Nr. bai: 3

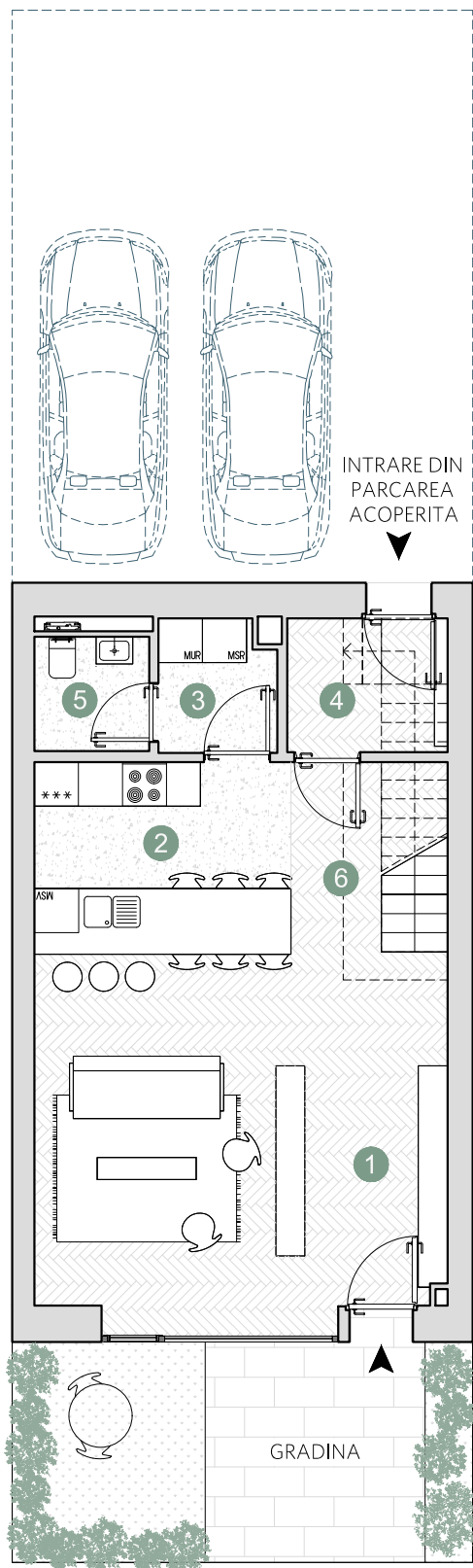
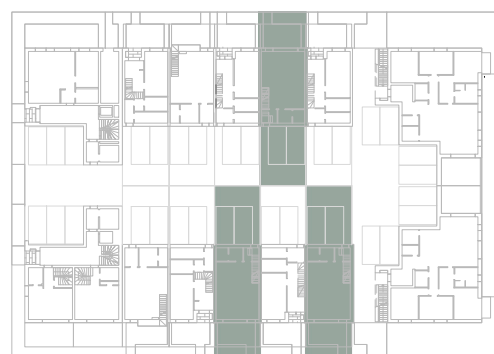
✓ Etaj: P+2

✓ Cladire: T5

✓ Suprafata utila totala = 142.7 m<sup>2</sup>

✓ Suprafata construita locuinta = 177.0 m<sup>2</sup>

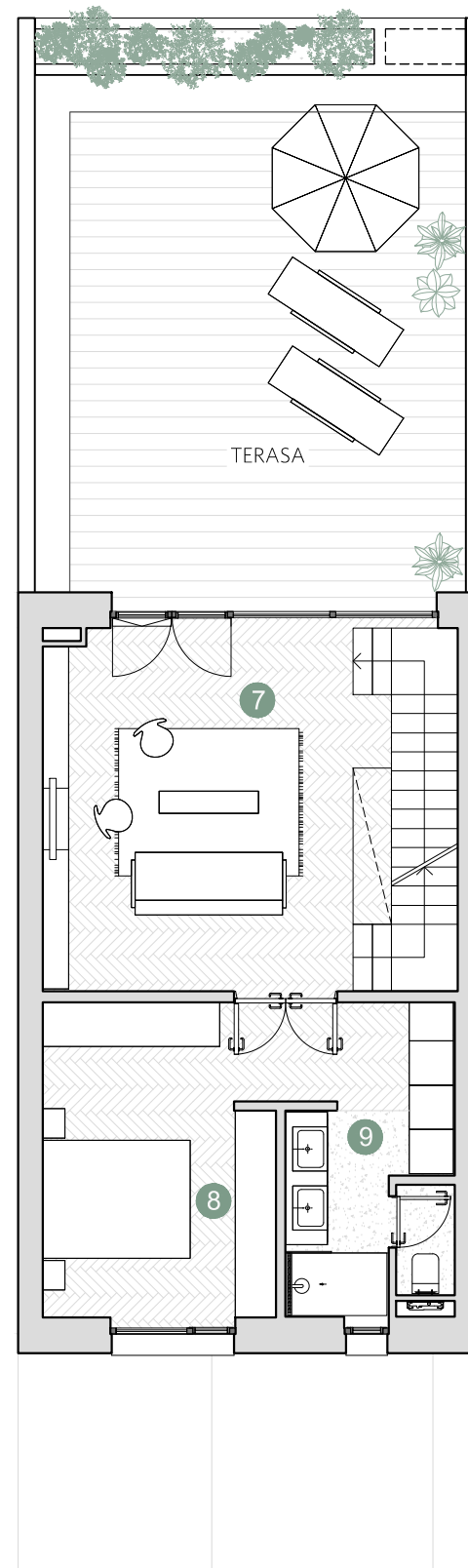
✓ Suprafata construita totala = 231.9 m<sup>2</sup>



### PARTER

Suprafete utile:

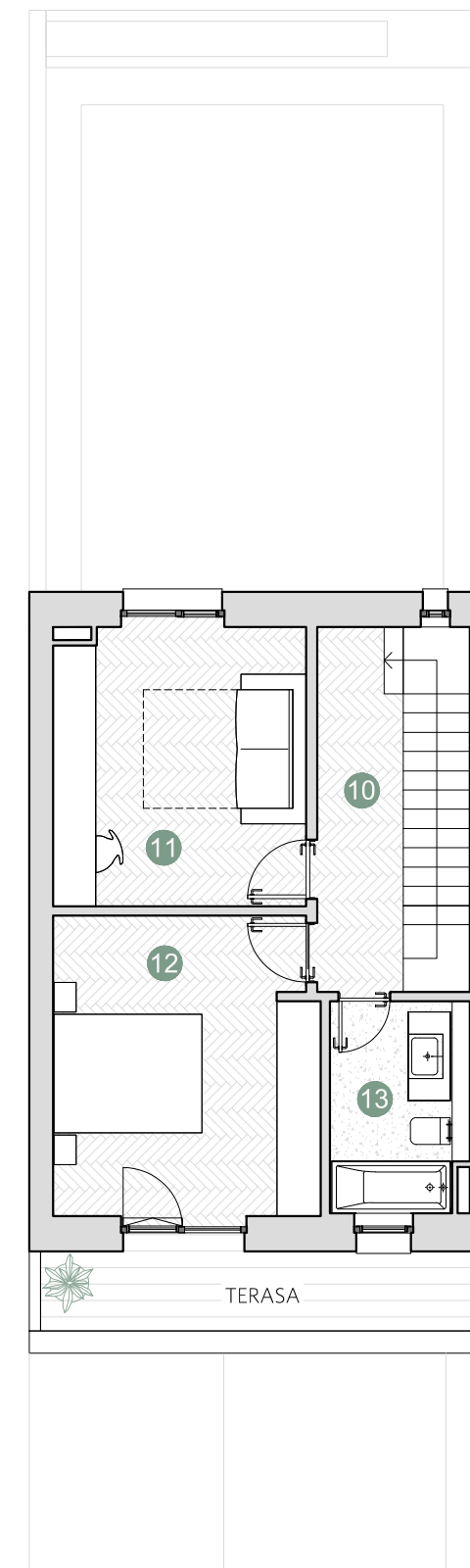
1. hol intrare & living	27.7 m <sup>2</sup>
2. bucatarie & dining	9.1 m <sup>2</sup>
3. spatiu depozitare	2.8 m <sup>2</sup>
4. sas	4.0 m <sup>2</sup>
5. baie	2.4 m <sup>2</sup>
6. coridor + scara	3.9 m <sup>2</sup>
<b>Total suprafata utila</b>	<b>49.9 m<sup>2</sup></b>
<b>Gradina</b>	<b>18.0 m<sup>2</sup></b>



### ETAJ 1

Suprafete utile:

7. living & scara	27.4 m <sup>2</sup>
8. dormitor	14.8 m <sup>2</sup>
9. baie + depozitare	8.3 m <sup>2</sup>
<b>Total suprafata utila</b>	<b>50.5 m<sup>2</sup></b>
<b>Terasa</b>	<b>44.2 m<sup>2</sup></b>



### ETAJ 2

Suprafete utile:

10. coridor & scara	10.0 m <sup>2</sup>
11. dormitor	12.9 m <sup>2</sup>
12. dormitor	14.6 m <sup>2</sup>
13. baie	4.7 m <sup>2</sup>
<b>Total suprafata utila</b>	<b>42.2 m<sup>2</sup></b>
<b>Terasa</b>	<b>6.5 m<sup>2</sup></b>

**Prime Kapital**

**adn**  
BIROU ARHITECTURA

