

The Townhouse B04

- ✓ Nr. camere: 4

- ✓ Nr. bai: 3

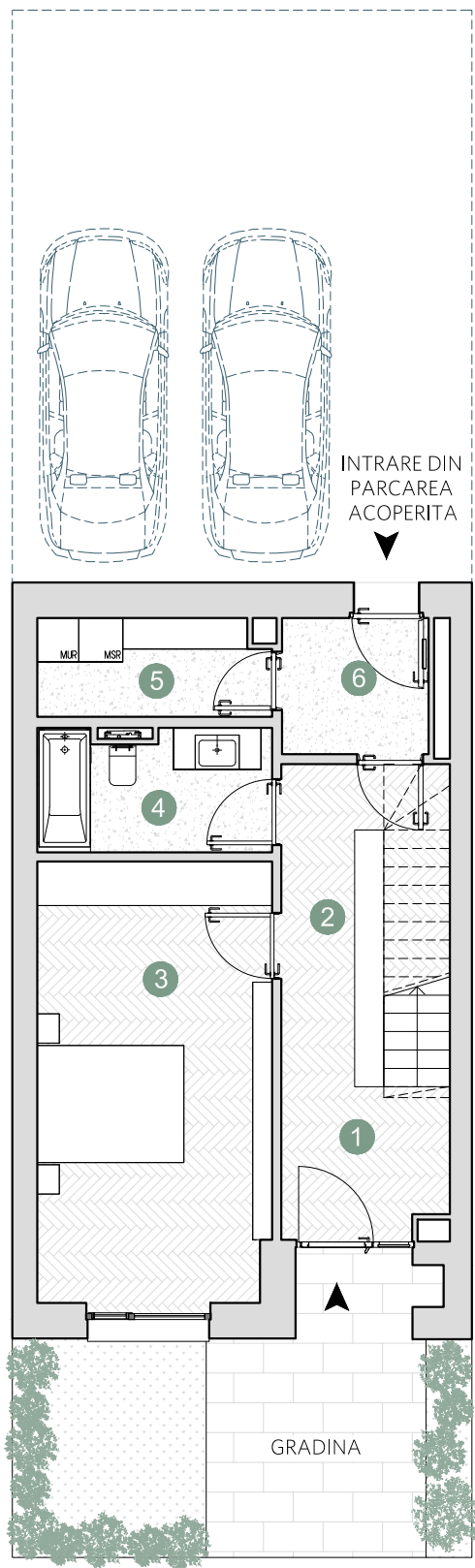
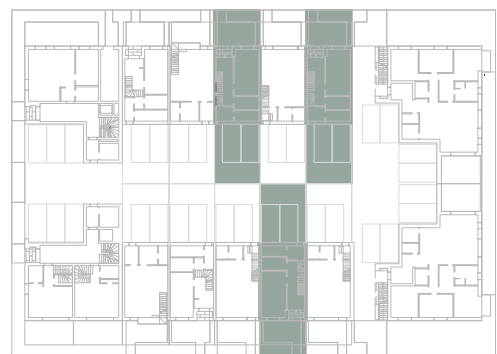
- ✓ Etaj: P+2

- ✓ Cladire: T5

- ✓ Suprafata utila totala = 140.9 m²

- ✓ Suprafata construita locuinta = 177.7 m²

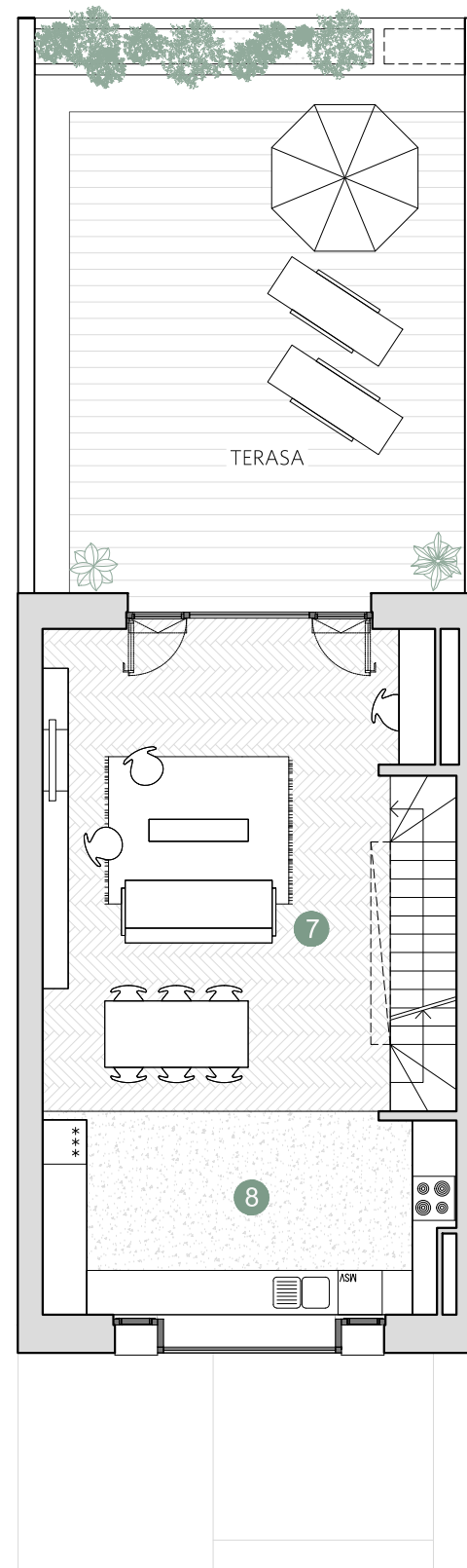
- ✓ Suprafata construita totala = 231.4 m²



PARTER

Suprafete utile:

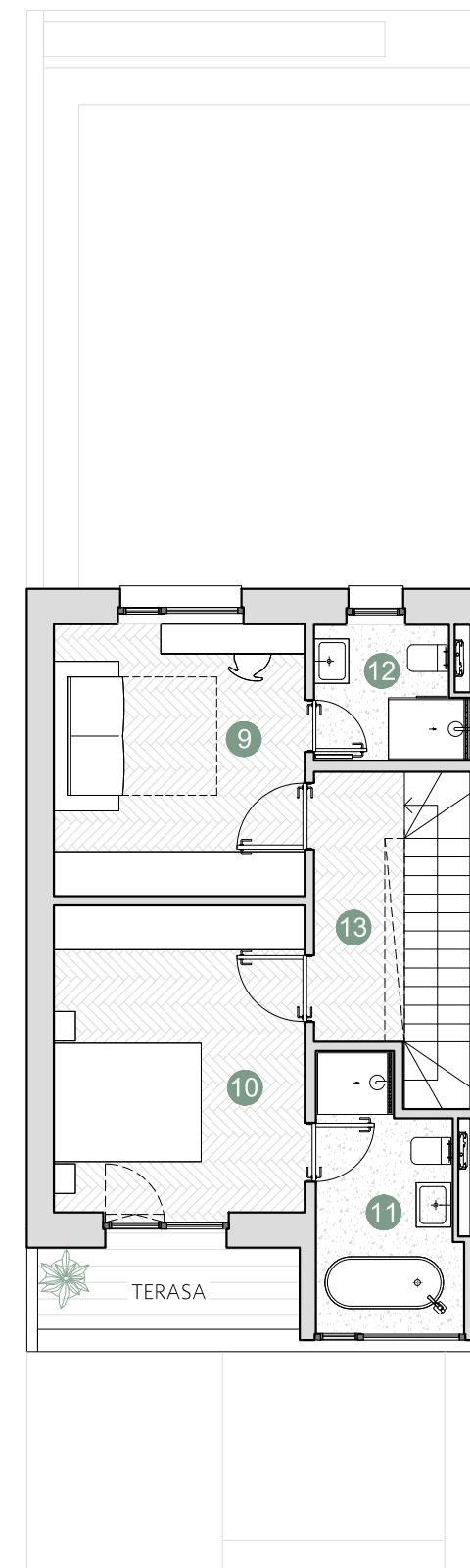
1. hol intrare	4.4 m ²
2. coridor & scara	8.5 m ²
3. dormitor	19.2 m ²
4. baie	5.1 m ²
5. spatiu depozitare	4.2 m ²
6. sas	3.7 m ²
<hr/>	
Total suprafata utila	45.1 m ²
Gradina & terasa acces	18.0 m ²



ETAJ 1

Suprafete utile:

7. living & dining & scara	35.8 m ²
8. bucatarie	15.1 m ²
<hr/>	
Total suprafata utila	50.9 m ²
TERASA	43.8 m ²



ETAJ 2

Suprafete utile:

9. dormitor	12.7 m ²
10. dormitor	14.3 m ²
11. baie	6.1 m ²
12. baie	3.7 m ²
13. coridor & scara	8.1 m ²
<hr/>	
Total suprafata utila	44.9 m ²
TERASA	3.9 m ²