

The Parkview C01

✓ Nr. camere: 4

✓ Nr. bai: 3

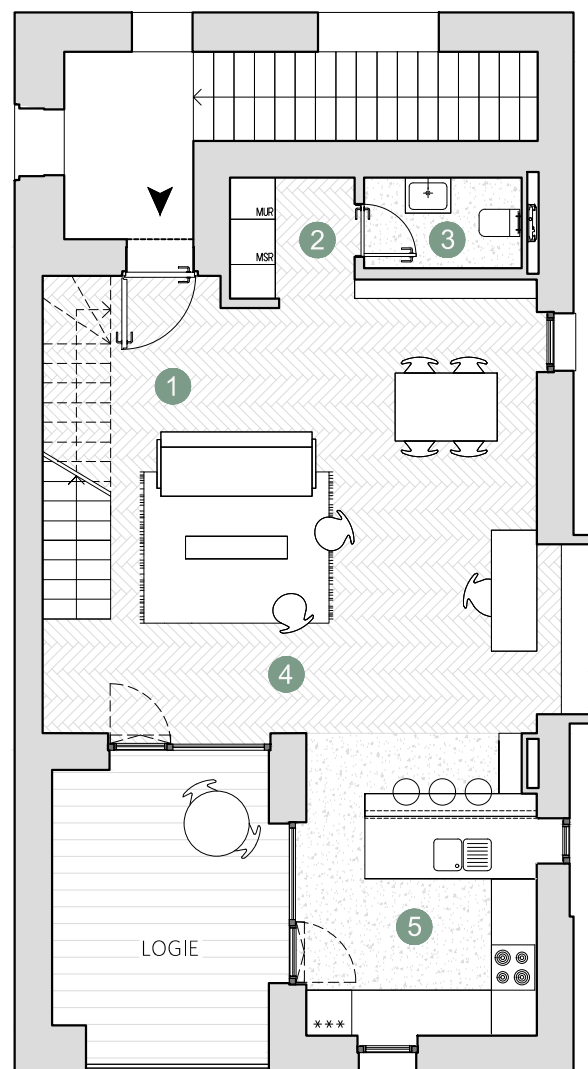
✓ Etaj: 1 + 2 (duplex) / 2

✓ Cladire: T5

✓ Suprafata utila totala = 129.2 m²

✓ Suprafata construita locuinta = 165.6 m²

✓ Suprafata construita totala = 184.1 m²



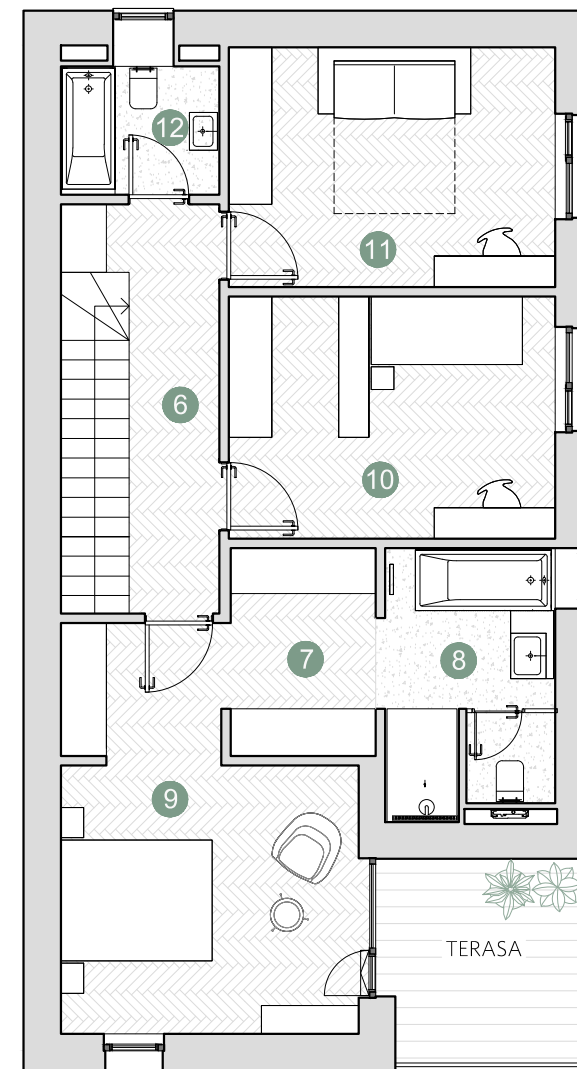
ETAJ 1

Suprafete utile:

1. hol intrare & scara	6.8 m ²
2. depozitare	2.0 m ²
3. grup sanitar	2.4 m ²
4. living	35.6 m ²
5. bucatarie	12.4 m ²

.....
Total suprafata utila 59.2 m²

Logie 12.1 m²



ETAJ 2

Suprafete utile:

6. hol	6.7 m ²
7. depozitare	5.2 m ²
8. baie	8.1 m ²
9. dormitor	18.4 m ²
10. dormitor	14.0 m ²
11. dormitor	13.9 m ²
12. baie	3.6 m ²

.....
Total suprafata utila 69.9 m²

Terasa 7.2 m²

Prime Kapital

adn
BIROU ARHITECTURA

