

## The Parkview C02

- ✓ Nr. camere: 4

---

- ✓ Nr. bai: 3

---

- ✓ Etaj: 1 + 2 (duplex) / 2

---

- ✓ Cladire: T5

---

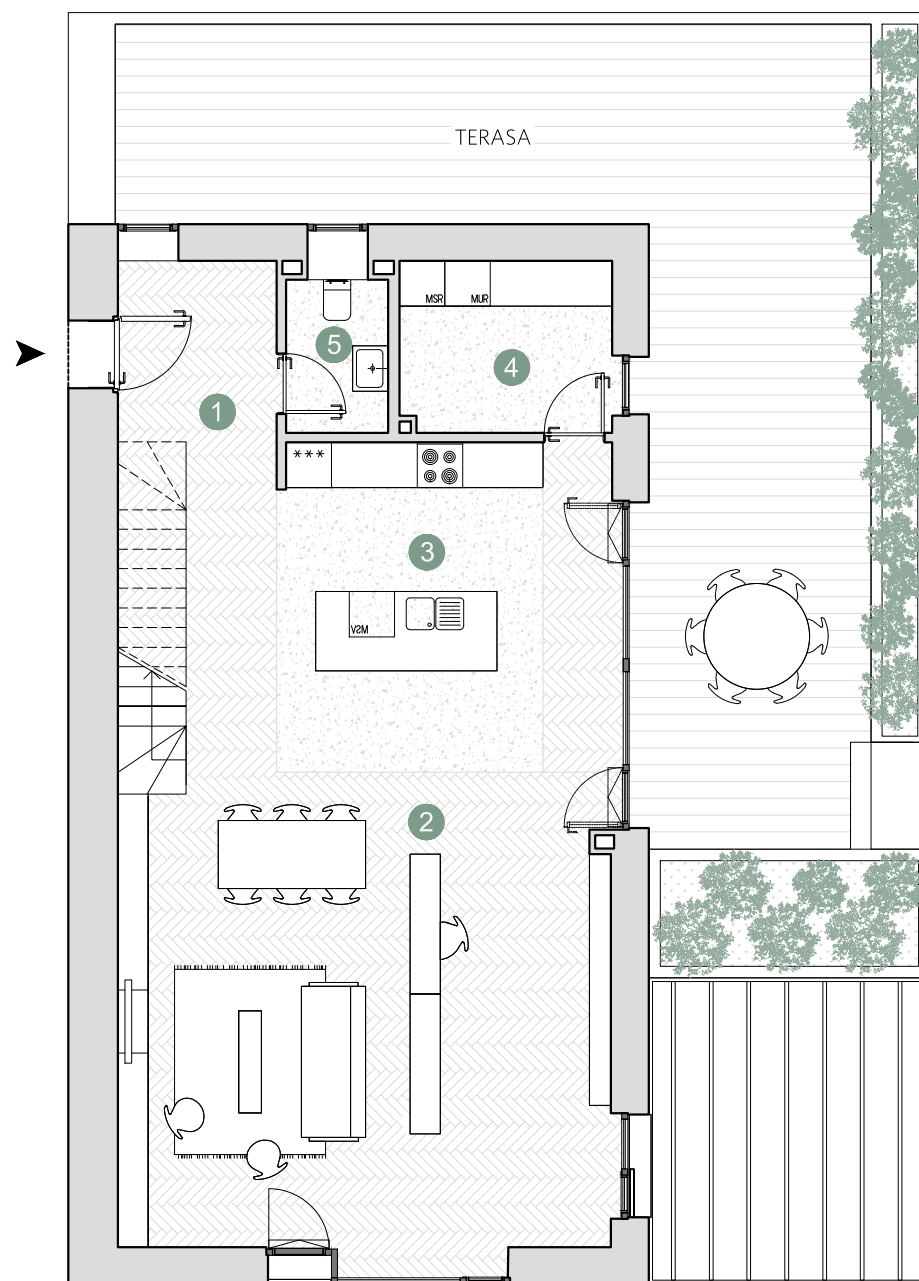
- ✓ Suprafata utila totala = 146.7 m<sup>2</sup>

---

- ✓ Suprafata construita locuinta = 189.3 m<sup>2</sup>

---

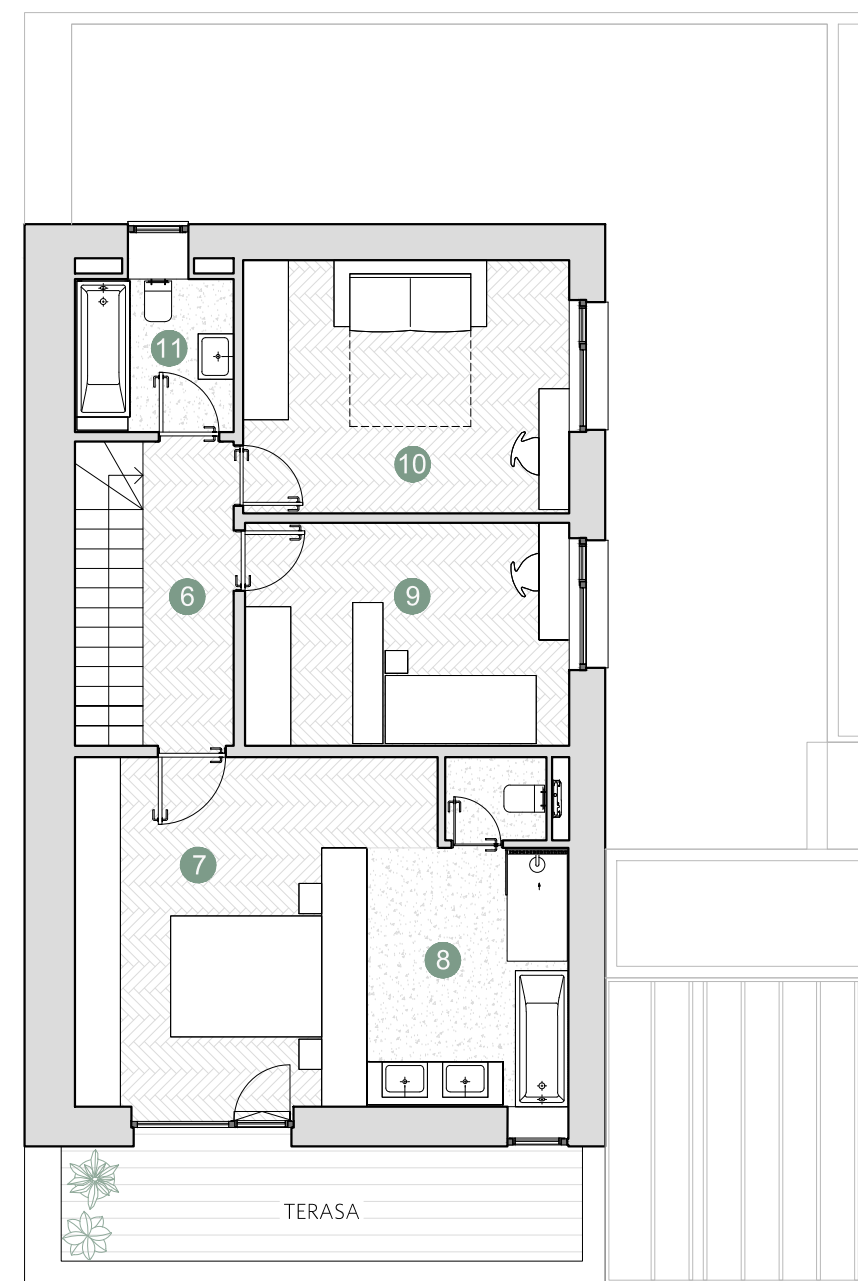
- ✓ Suprafata construita totala = 271.1 m<sup>2</sup>



ETAJ 1

Suprafete utile:

1. hol intrare & scara	16.8 m <sup>2</sup>
2. living & spatiu de lucru	47.6 m <sup>2</sup>
3. bucatarie	13.7 m <sup>2</sup>
4. depozitare	6.3 m <sup>2</sup>
5. grup sanitar	2.6 m <sup>2</sup>
<hr/>	
Total suprafata utila	80.8? m <sup>2</sup>
Terasa	63.1 m <sup>2</sup>



ETAJ 2

Suprafete utile:

6. hol	4.3 m <sup>2</sup>
7. dormitor	17.4 m <sup>2</sup>
8. baie	12.8 m <sup>2</sup>
9. dormitor	12.7 m <sup>2</sup>
10. dormitor	14.4 m <sup>2</sup>
11. baie	4.2 m <sup>2</sup>
<hr/>	
Total suprafata utila	65.8 m <sup>2</sup>
Terasa	9.9 m <sup>2</sup>

 Prime Kapital

 adn  
BIROU ARHITECTURA

