

## The Urban 2RB

☑ Nr. camere: 2

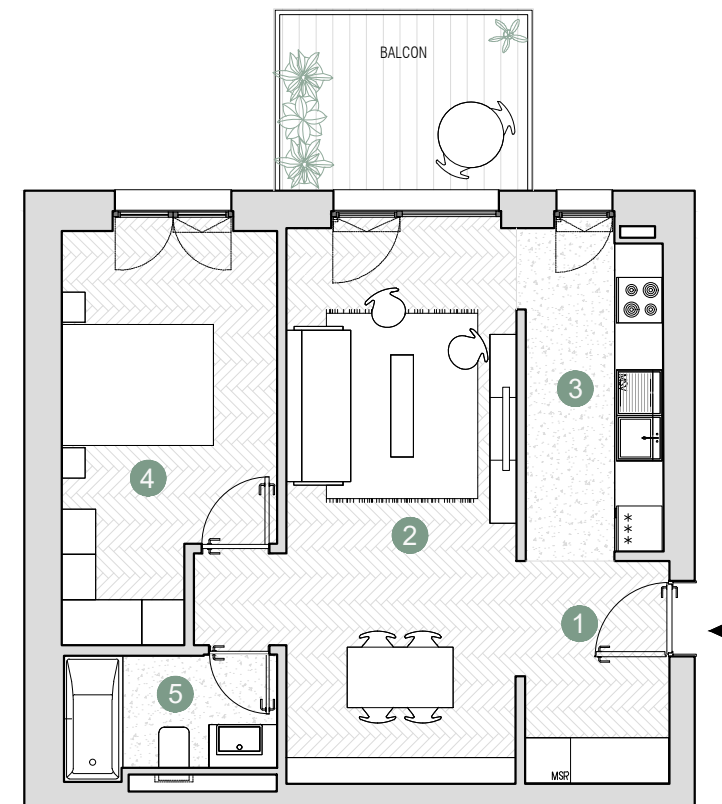
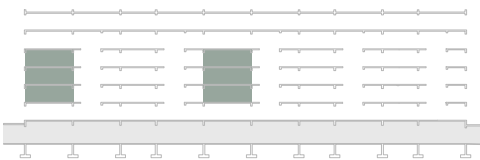
☑ Nr. bai: 1

☑ Etaj: 1-3 / 4

☑ Cladire: A1b

☑ Suprafata construita locuinta = 68.33 m<sup>2</sup>

☑ Suprafata construita totala = 76.56 m<sup>2</sup>



Suprafete utile:

1. hol intrare	5.77 m <sup>2</sup>
2. living & dining	24.28 m <sup>2</sup>
3. bucatarie	8.01 m <sup>2</sup>
4. dormitor	14.4 m <sup>2</sup>
5. baie	4.42 m <sup>2</sup>

.....  
Total suprafata utila 56.88 m<sup>2</sup>

Balcon 8.08 m<sup>2</sup>