

## The Urban SB

☑ Nr. camere: 1 / dormitor separat

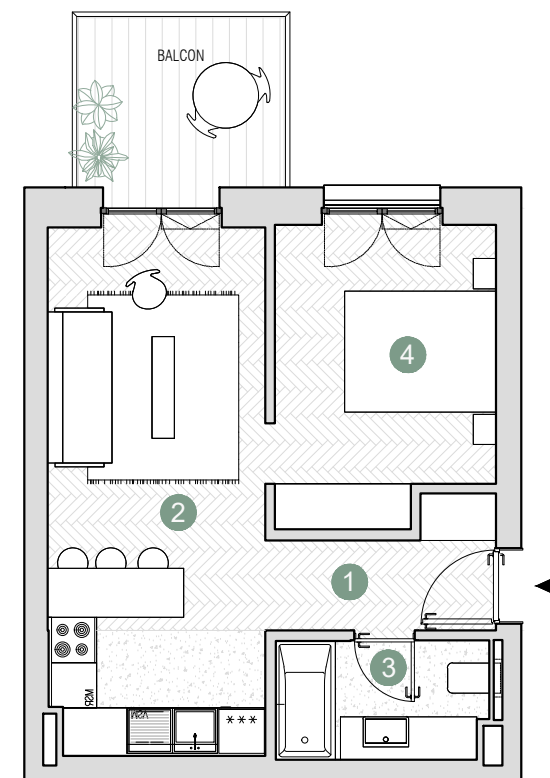
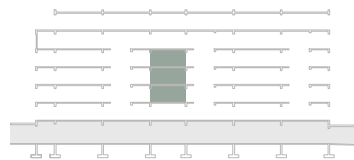
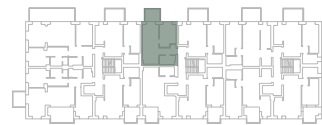
☑ Nr. bai: 1

☑ Etaj: 1-3 / 4

☑ Cladire: A1a, A1c

☑ Suprafata construita locuinta = 48.51 m<sup>2</sup>

☑ Suprafata totala = 55.99 m<sup>2</sup>



Suprafete utile:

1. hol intrare	4.26 m <sup>2</sup>
2. living & bucatarie	20.35 m <sup>2</sup>
3. baie	4.43 m <sup>2</sup>
4. dormitor	11.49 m <sup>2</sup>

.....  
Total suprafata utila 40.54 m<sup>2</sup>

Balcon 6.54 m<sup>2</sup>