

The Urban 4DXF

✓ Nr. camere: 4

✓ Nr. bai: 2

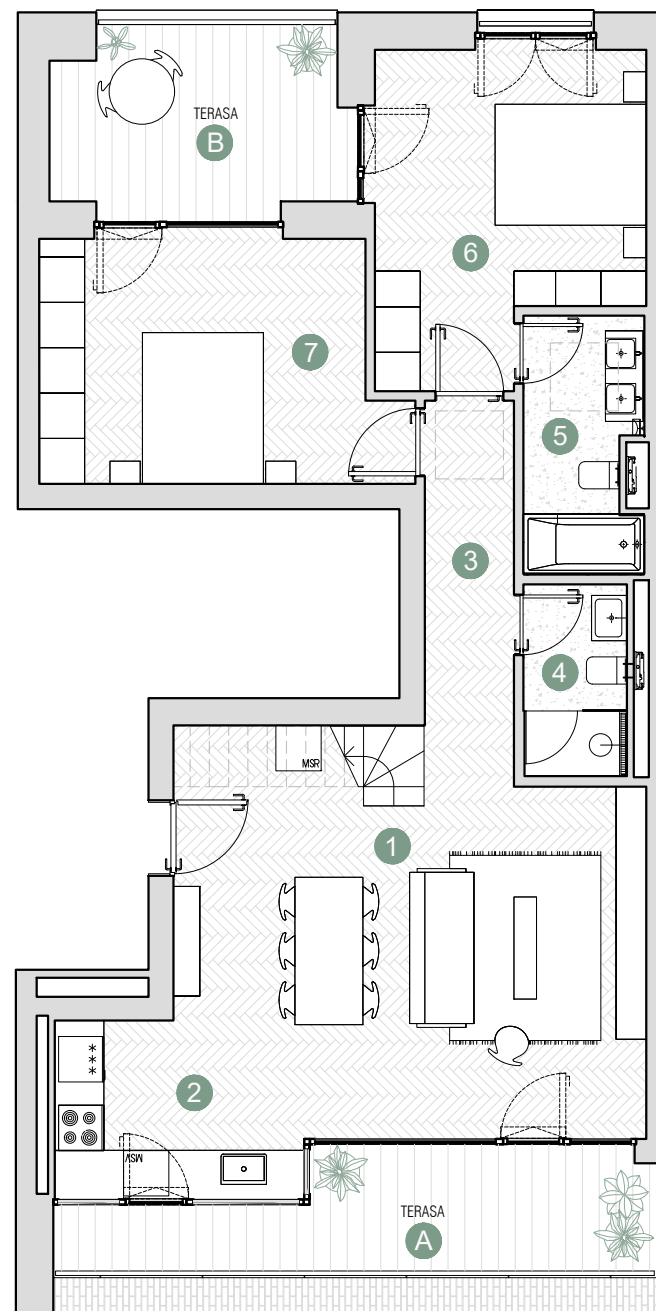
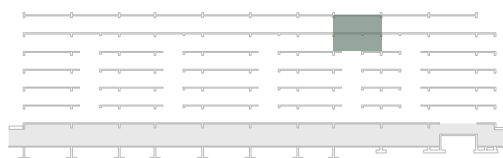
✓ Etaj: 4 / 4

✓ Cladire: A1c

✓ Suprafata utila totala = 96.50 m²

✓ Suprafata construita locuinta = 153.24 m²

✓ Suprafata construita totala = 221.17 m²

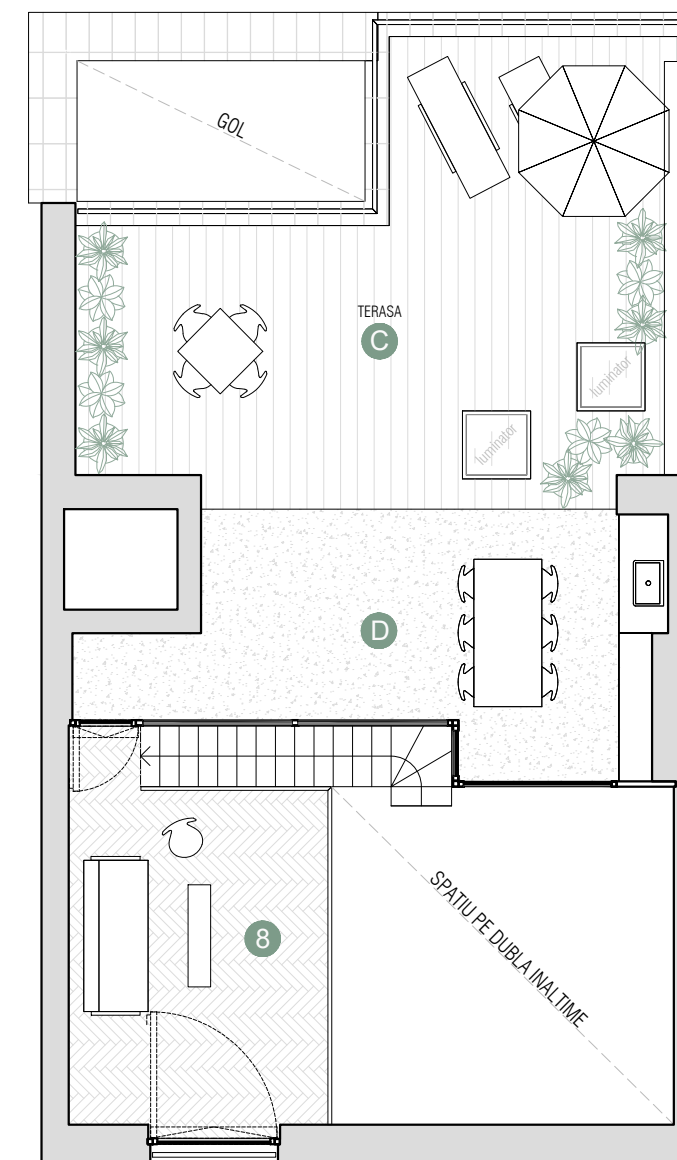


ETAJ 1

Suprafete utile:

1. living + Dining	29.02 m ²
2. bucatarie	7.82 m ²
3. hol	5.06 m ²
4. baie	3.47 m ²
5. baie	5.05 m ²
6. dormitor	14.68 m ²
7. dormitor	15.09 m ²

Total suprafata utila 80.20 m²



ETAJ 2

Suprafete utile:

8. supanta	16.30 m ²
------------	----------------------

Total suprafata utila 16.30 m²
Scara duplex 3.66 m²

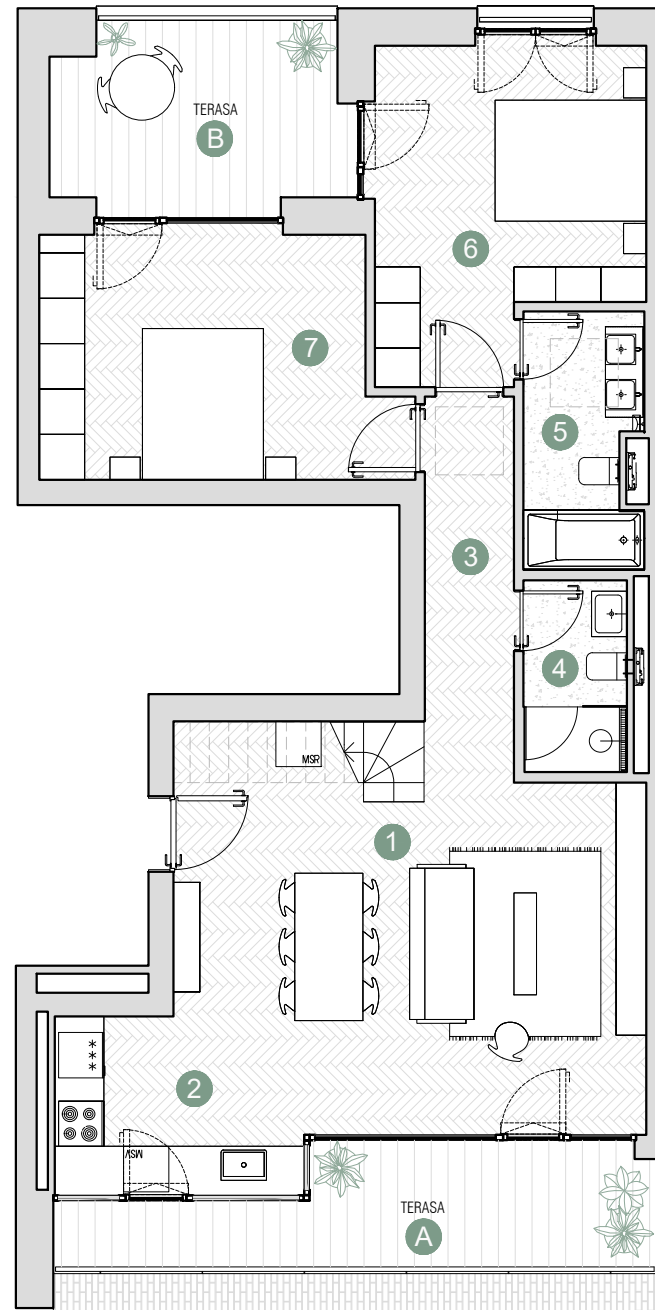
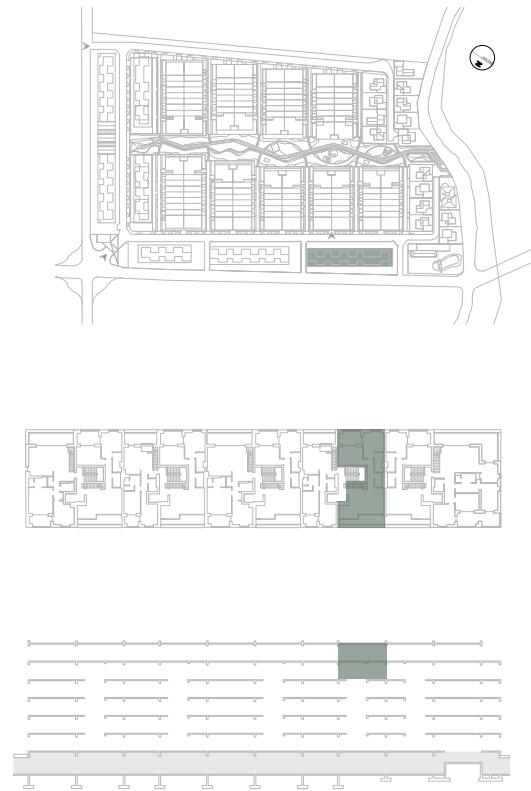
Terasa - A	9.58 m ²
Terasa - B	10.58 m ²
Terasa - C	40.50 m ²
Terasa acoperita - D	20.60 m ²

⊙ S. u. locuinta = 96.50 m²

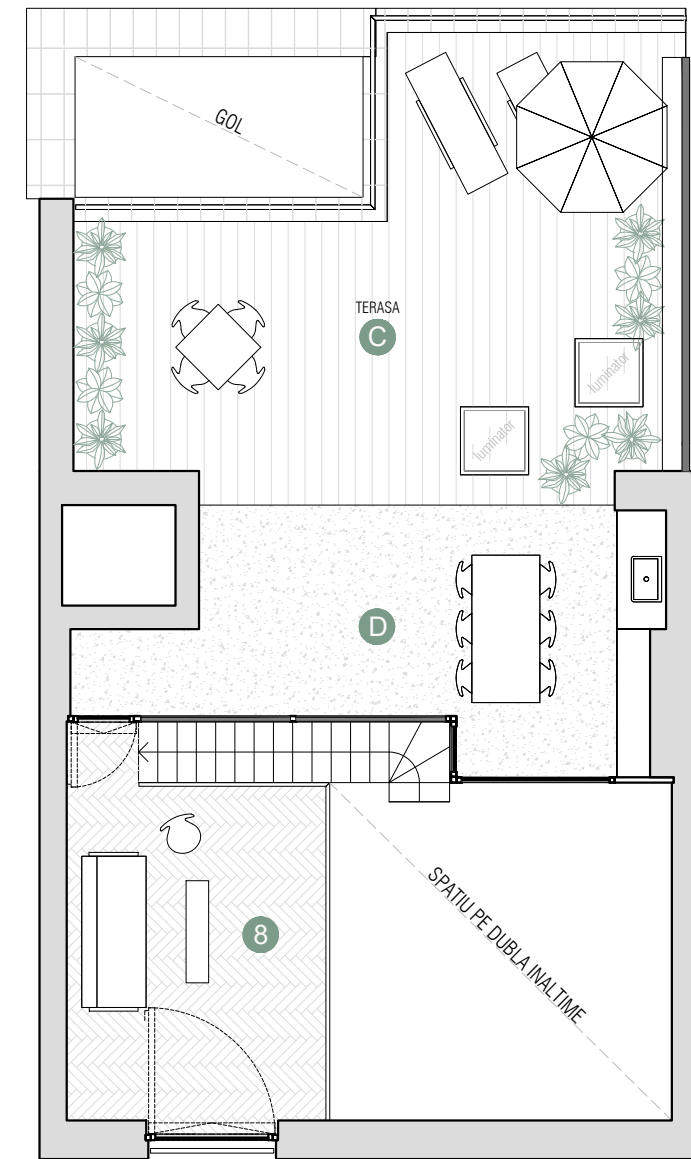
⊙ S. c. locuinta = 153.24 m²

⊙ S. c. totala = 221.17 m²

*Suprafata construita = S.c.



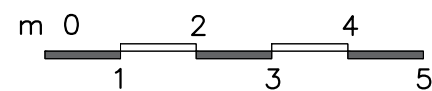
ETAJ 1



ETAJ 2

 Prime Kapital

 adn
BUREAU D'ARCHITECTURE



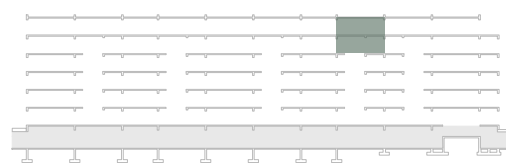
ETAJ I

Suprafete utile:

1. living + Dining	29.02 m ²
2. bucatarie	7.82 m ²
3. hol	5.05 m ²
4. baie	3.47 m ²
5. baie	5.05 m ²
6. dormitor	14.68 m ²
7. dormitor	15.09 m ²

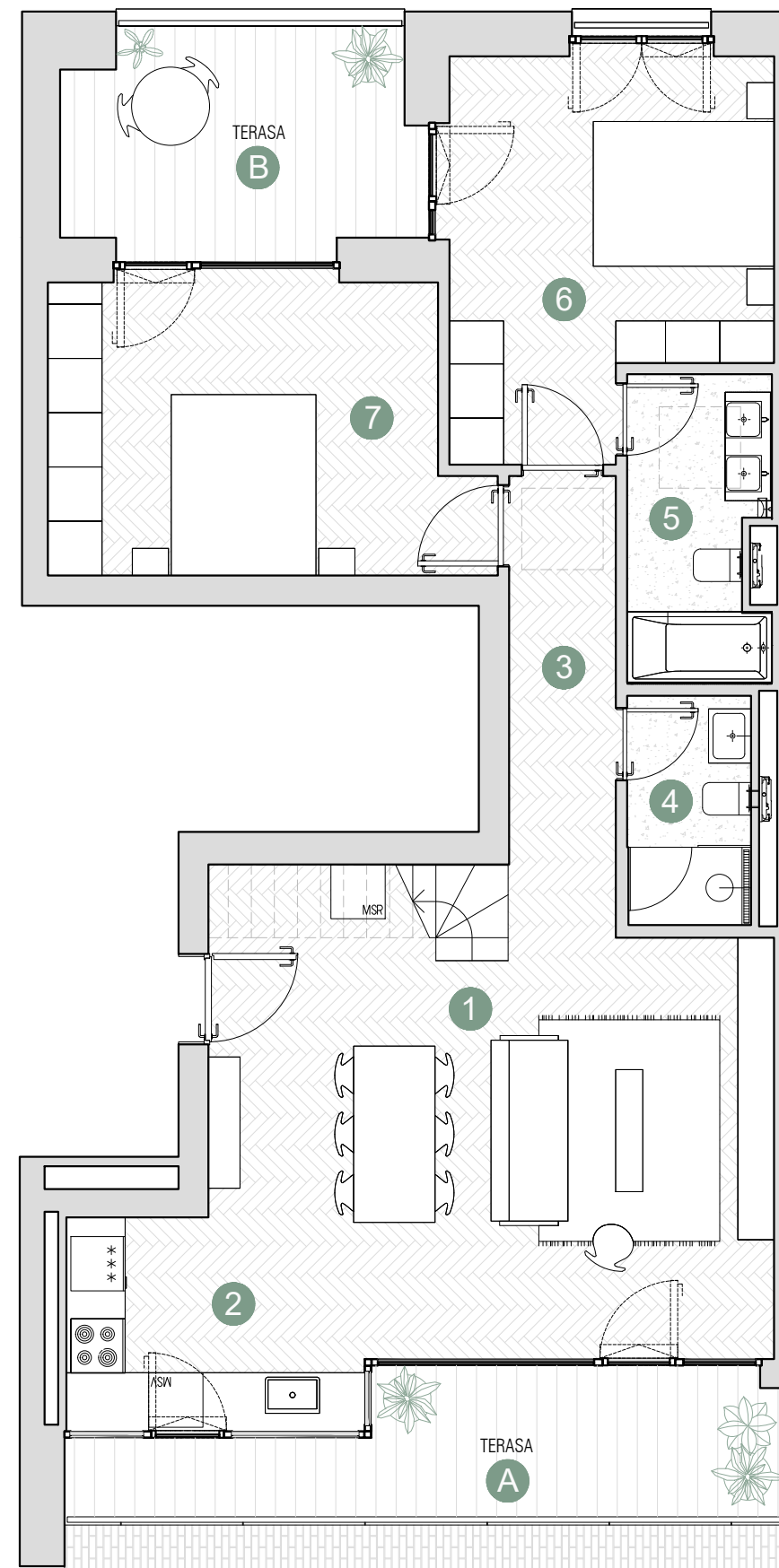
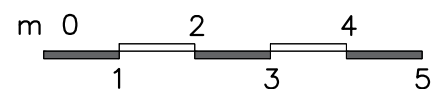
 Total suprafata utila 80.20 m²

Terasa - A 9.58 m²
 Terasa - B 10.58 m²



Prime Kapital

adn
 biro de arhitectură



ETAJ 1

ETAJ II

Suprafete utile:

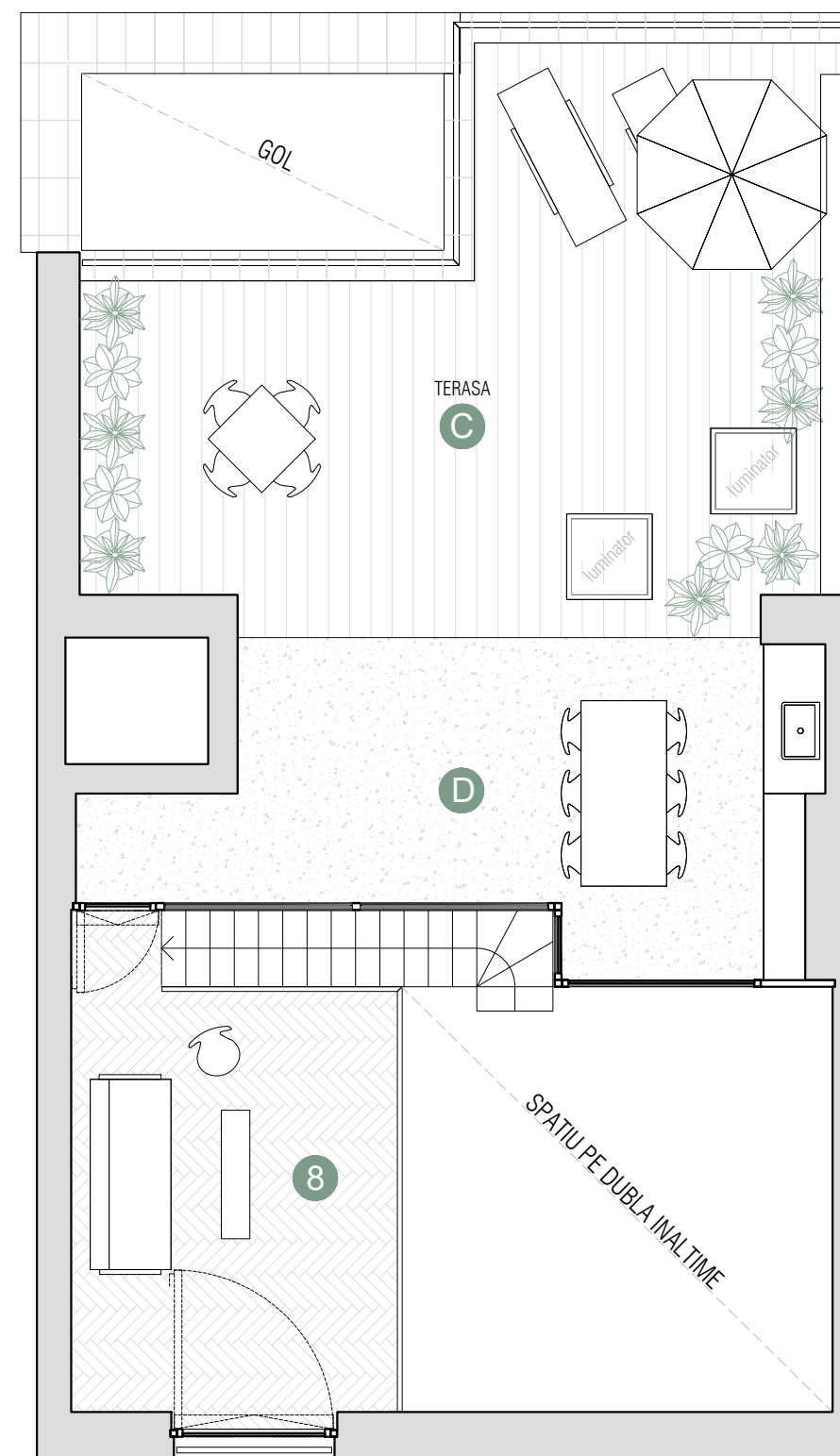
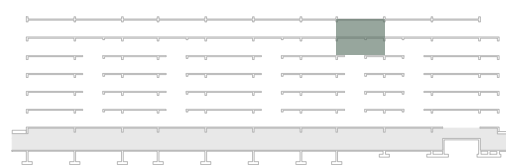
8. supanta 16.30 m²

Total suprafata utila 16.30 m²

Scara duplex 3.66 m²

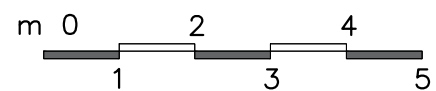
TERASA - C 40.50 m²

TERASA acoperita - D 20.60 m²



 **Prime Kapital**

 **adn**
Biro de arhitectură



ETAJ 2