

The Townhouse B03

- ☑ Nr. camere: 5

- ☑ Nr. bai: 3

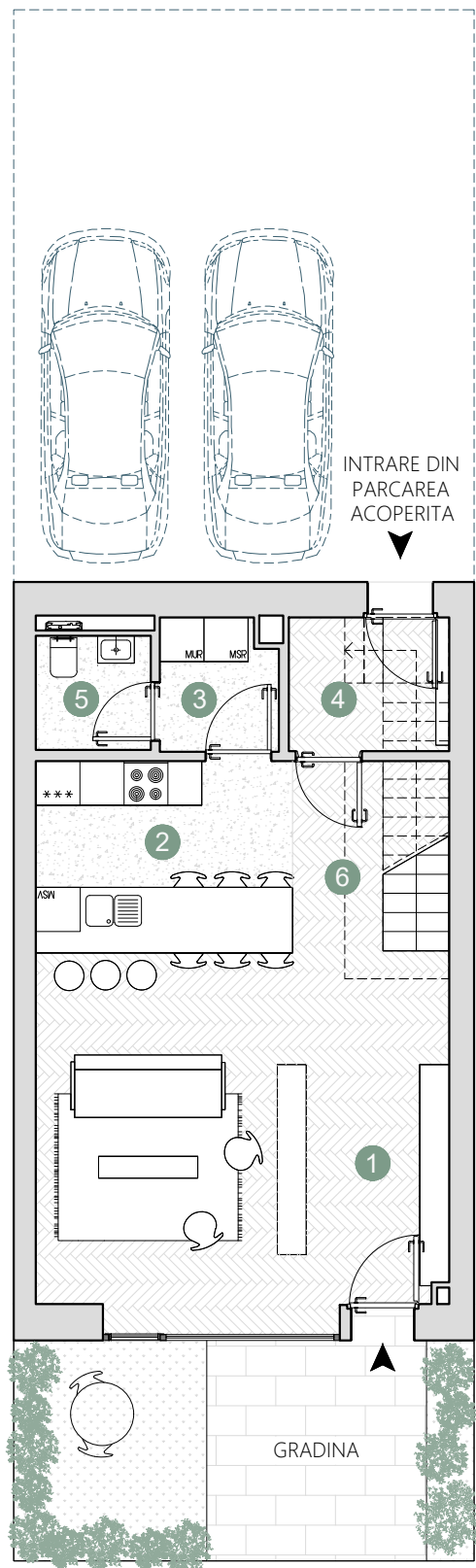
- ☑ Etaj: P+2

- ☑ Cladire: T3, T4

- ☑ Suprafata utila totala = 133.58 m²

- ☑ Suprafata construita locuinta = 177.69 m²

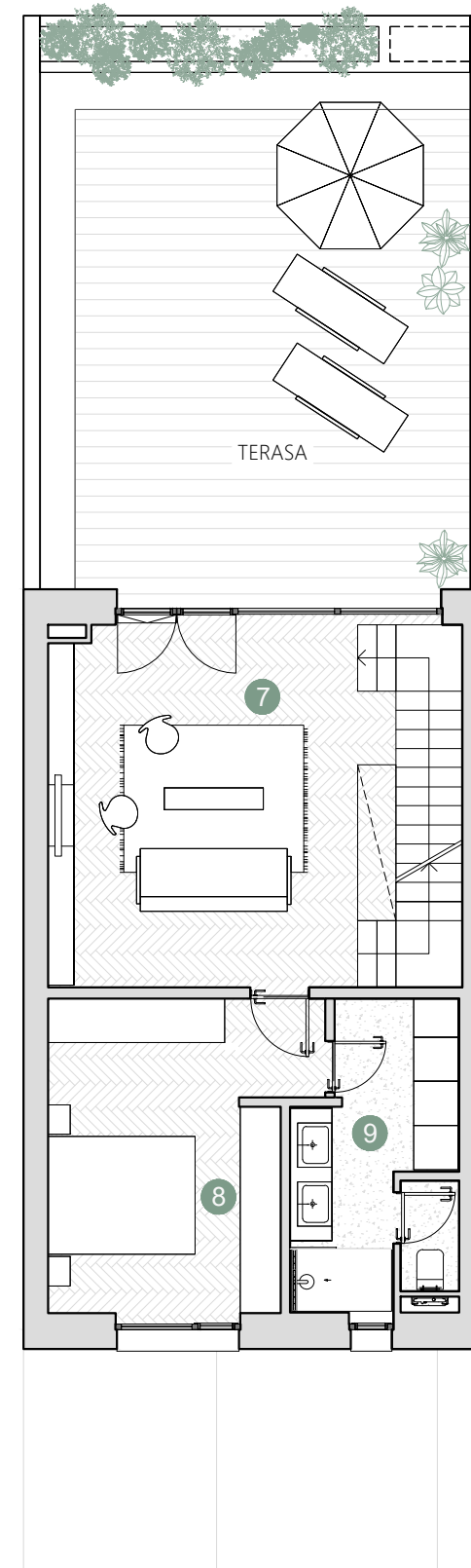
- ☑ Suprafata construita totala = 250.91 m²



PARTER

Suprafete utile:

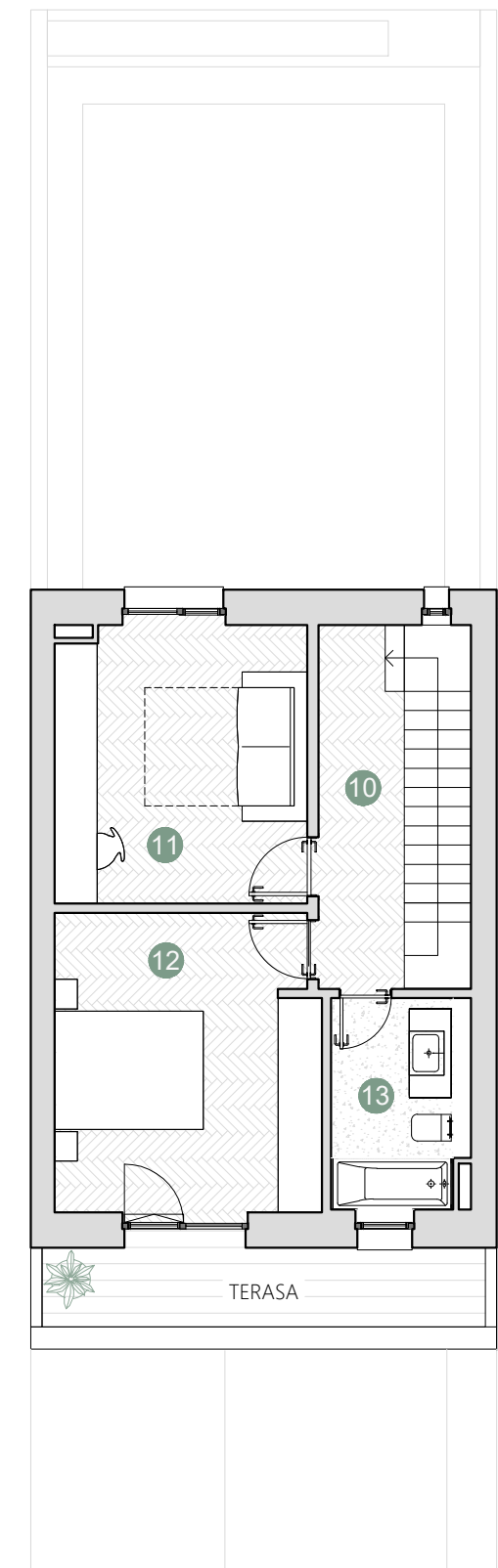
1. hol intrare & living	26.34 m ²
2. bucatarie & dining	9.13 m ²
3. spatiu depozitare	2.82 m ²
4. sas	3.96 m ²
5. baie	2.39 m ²
6. coridor	5.87 m ²
Total suprafata utila	50.51 m²
Gradina	17.85 m ²



ETAJ 1

Suprafete utile:

7. living	23.00 m ²
8. dormitor	14.85 m ²
9. baie + depozitare	8.12 m ²
Total suprafata utila	45.97 m²
TERASA	42.34 m ²



ETAJ 2

Suprafete utile:

10. coridor	5.00 m ²
11. dormitor	12.93 m ²
12. dormitor	14.62 m ²
13. baie	4.55 m ²
Total suprafata utila	37.10 m²
Suprafata utila scara	10.11 m ²
TERASA	6.21 m ²