

The Urban A01

- ✓ Nr. camere: 3

- ✓ Nr. bai: 2

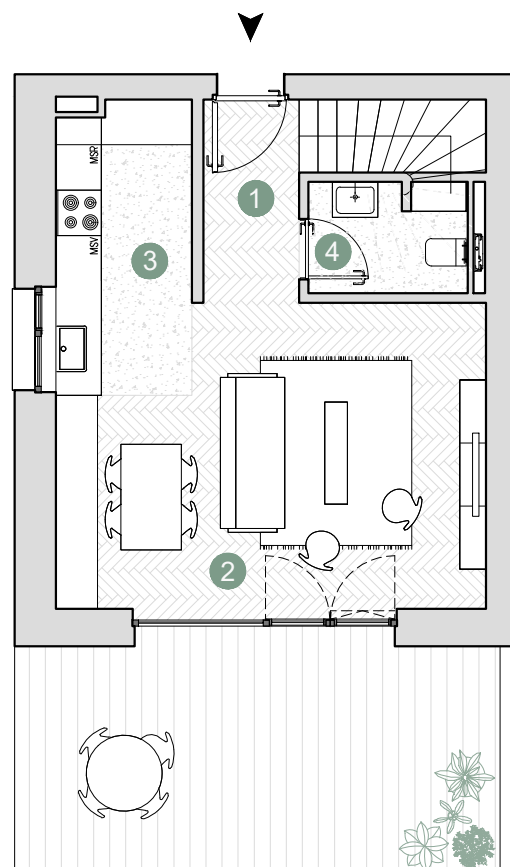
- ✓ Etaj: P+1 (duplex)/4

- ✓ Cladire: T2, T3, T4

- ✓ Suprafata utila totala = 66.73 m²

- ✓ Suprafata construita locuinta = 95.49 m²

- ✓ Suprafata construita totala = 114.53 m²



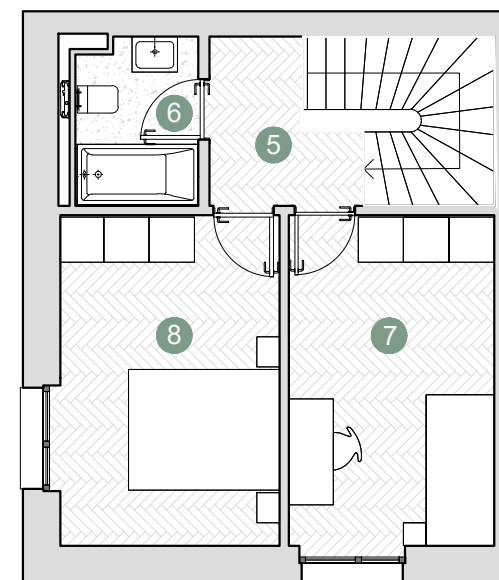
PARTER

Suprafete utile:

1. hol intrare	3.40 m ²
2. living & dining	21.28 m ²
3. bucatarie	6.95 m ²
4. grup sanitar	3.06 m ²

.....
Total suprafata utila 34.69 m²

Terasa 19.97 m²



ETAJ 1

Suprafete utile:

5. hol	3.51 m ²
6. baie	3.45 m ²
7. dormitor	12.08 m ²
8. dormitor	13.00 m ²

.....
Total suprafata utila 32.04 m²

Suprafata utila scara 4.45 m²